

CHI3L1 Rabbit Polyclonal Antibody



CAB11510

Product Information

Size:

20uL, 50uL, 100uL, 200uL

Observed MW:

43kDa

Calculated MW:

42kDa

Applications:

WB IHC IF

Reactivity:

Human, Mouse

Antibody Information

Recommended dilutions:

WB 1:500 - 1:2000 IHC 1:50
- 1:200 IF 1:50 - 1:200

Source:

Rabbit

Isotype:

IgG

Purification:

Affinity purification

Protein Background

Chitinases catalyze the hydrolysis of chitin, which is an abundant glycopolymer found in insect exoskeletons and fungal cell walls. The glycoside hydrolase 18 family of chitinases includes eight human family members. This gene encodes a glycoprotein member of the glycosyl hydrolase 18 family. The protein lacks chitinase activity and is secreted by activated macrophages, chondrocytes, neutrophils and synovial cells. The protein is thought to play a role in the process of inflammation and tissue remodeling.

Immunogen information

Gene ID:

1116

Uniprot

P36222

Synonyms:

CHI3L1; ASRT7; CGP-39; GP-39; GP39; HC-gp39; HCGP-3P; YKL-40;
YKL40; YYL-40; hCGP-39

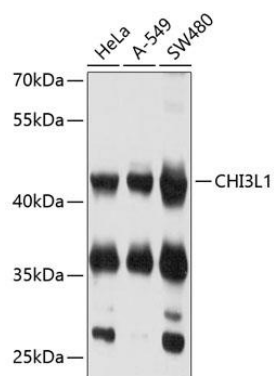
Immunogen:

Recombinant fusion protein containing a sequence corresponding to amino acids 22-240 of human CHI3L1 (NP_001267.2).

Storage:

Store at -20°C. Avoid freeze / thaw cycles. Buffer: PBS with 0.02% sodium azide, 50% glycerol, pH7.3.

Product Images



Western blot - CHI3L1 Polyclonal Antibody (CAB11510)