

# MTCO2 Rabbit Polyclonal Antibody



CAB11522

---

## Product Information

### Size:

20uL, 50uL, 100uL, 200uL

### Observed MW:

23kDa

### Calculated MW:

25kDa

### Applications:

WB IHC

### Reactivity:

Human, Mouse, Rat

## Antibody Information

### Recommended dilutions:

WB 1:500 - 1:2000 IHC 1:50  
- 1:100

### Source:

Rabbit

### Isotype:

IgG

### Purification:

Affinity purification

## Protein Background

### Immunogen information

#### Gene ID:

17709

#### Uniprot

P00403

#### Synonyms:

MT-CO2; COII; MTCO2; COX2

#### Immunogen:

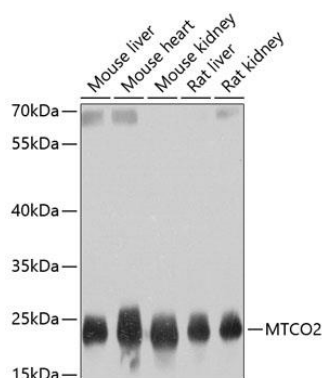
A synthetic peptide corresponding to a sequence within amino acids 100-200 of mouse MTCO2 (NP\_904331.1).

#### Storage:

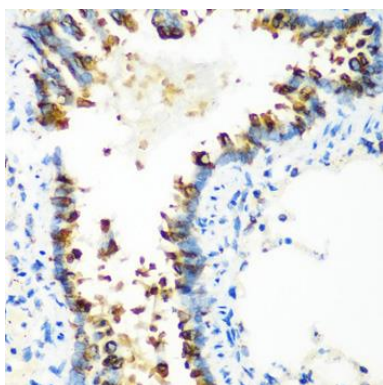
Store at -20°C. Avoid freeze / thaw cycles. Buffer: PBS with 0.02% sodium azide, 50% glycerol, pH7.3.

## Product Images

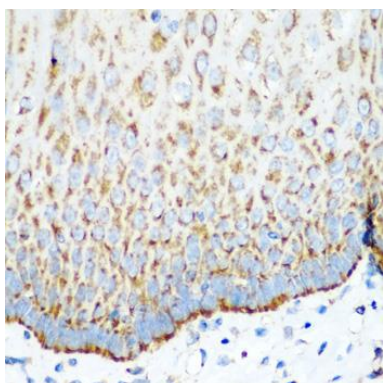
---



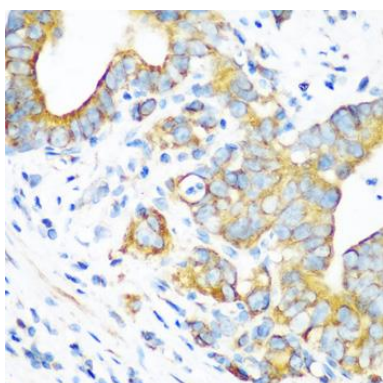
Western blot analysis of extracts of various cell lines, using MTCO2 antibody (CAB11522) at 1:800 dilution. Secondary antibody: HRP Goat Anti-Rabbit IgG (H+L) (CABS014) at 1:10000 dilution. Lysates/proteins: 25ug per lane. Blocking buffer: 3% nonfat dry milk in TBST. Detection: ECL Basic Kit (CABM00020). Exposure time: 1s.



Immunohistochemistry of paraffin-embedded rat lung using MTCO2 antibody (CAB11522) at dilution of 1:100 (40x lens).



Immunohistochemistry of paraffin-embedded human esophagus using MTCO2 antibody (CAB11522) at dilution of 1:100 (40x lens).



Immunohistochemistry of paraffin-embedded human stomach using MTCO2 antibody (CAB11522) at dilution of 1:100 (40x lens).