

MAD1L1 Rabbit Polyclonal Antibody



CAB1153

Product Information

Size:

20uL, 50uL, 100uL, 200uL

Observed MW:

95kDa

Calculated MW:

72kDa/83kDa

Applications:

WB IHC IF

Reactivity:

Human, Mouse

Protein Background

MAD1L1 is a component of the mitotic spindle-assembly checkpoint that prevents the onset of anaphase until all chromosome are properly aligned at the metaphase plate. MAD1L1 functions as a homodimer and interacts with MAD2L1. MAD1L1 may play a role in cell cycle control and tumor suppression. Alternative splicing results in multiple transcript variants.

Immunogen information

Gene ID:

8379

Uniprot

Q9Y6D9

Synonyms:

MAD1L1; MAD1; PIG9; TP53I9; TXBP181

Antibody Information

Recommended dilutions:

WB 1:500 - 1:2000 IHC 1:50
- 1:200 IF 1:50 - 1:200

Source:

Rabbit

Isotype:

IgG

Purification:

Affinity purification

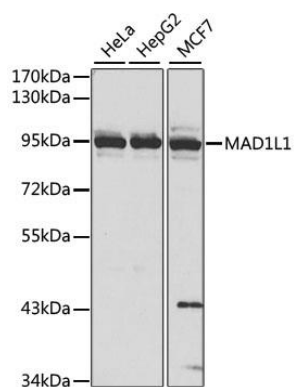
Immunogen:

Recombinant fusion protein containing a sequence corresponding to amino acids 360-700 of human MAD1L1 (NP_001013859.1).

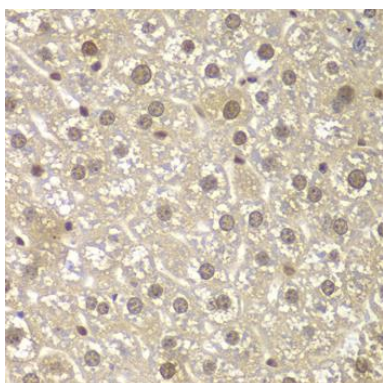
Storage:

Store at -20°C. Avoid freeze / thaw cycles. Buffer: PBS with 0.02% sodium azide, 50% glycerol, pH7.3.

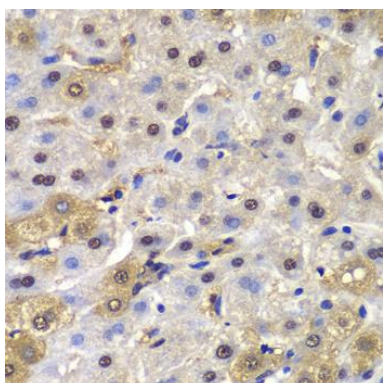
Product Images



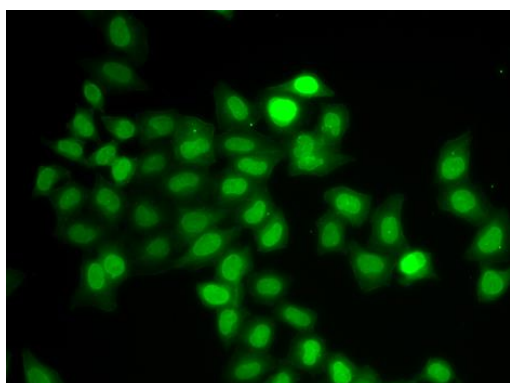
Western blot analysis of extracts of various cell lines, using MAD1L1 antibody (CAB1153) at 1:1000 dilution. Secondary antibody: HRP Goat Anti-Rabbit IgG (H+L) (CABS014) at 1:10000 dilution. Lysates/proteins: 25ug per lane. Blocking buffer: 3% nonfat dry milk in TBST. Detection: ECL Basic Kit (CABM00020).



Immunohistochemistry of paraffin-embedded mouse liver using MAD1L1 antibody (CAB1153) at dilution of 1:100 (40x lens).



Immunohistochemistry of paraffin-embedded human liver cancer using MAD1L1 antibody (CAB1153) at dilution of 1:100 (40x lens).



Immunofluorescence analysis of U2OS cells using MAD1L1 antibody (CAB1153).