

# BACE1 Rabbit Monoclonal Antibody



CAB11533

## Product Information

### Size:

20uL, 50uL, 100uL, 200uL

### Observed MW:

70KDa

### Calculated MW:

70kDa

### Applications:

WB

### Reactivity:

Human, Mouse, Rat

## Antibody Information

### Recommended dilutions:

WB 1:500 - 1:2000

### Source:

Rabbit

### Isotype:

IgG

### Purification:

Affinity purification

## Protein Background

This gene encodes a member of the peptidase A1 family of aspartic proteases. Alternative splicing results in multiple transcript variants, at least one of which encodes a preproprotein that is proteolytically processed to generate the mature protease. This transmembrane protease catalyzes the first step in the formation of amyloid beta peptide from amyloid precursor protein. Amyloid beta peptides are the main constituent of amyloid beta plaques, which accumulate in the brains of human Alzheimer's disease patients. [provided by RefSeq, Nov 2015]

## Immunogen information

### Gene ID:

23621

### Uniprot

P56817

### Synonyms:

ASP2; BACE; HSPC104

### Immunogen:

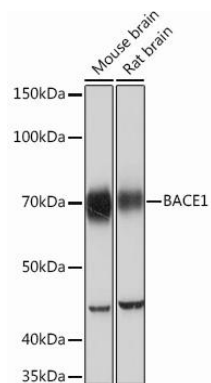
A synthesized peptide derived from human BACE1

### Storage:

Store at -20°C. Avoid freeze / thaw cycles. Buffer: PBS with 0.02% sodium azide, 0.05% BSA, 50% glycerol, pH7.3.

## Product Images

---



Western blot - BACE1 Rabbit mAb (CAB11533)