

# eEF1A1 Rabbit Monoclonal Antibody



CAB11545

## Product Information

### Size:

20uL, 50uL, 100uL, 200uL

### Observed MW:

50KDa

### Calculated MW:

50kDa

### Applications:

WB IF

### Reactivity:

Human, Mouse, Rat

## Antibody Information

### Recommended dilutions:

WB 1:500 - 1:2000 IF 1:50 - 1:200

### Source:

Rabbit

### Isotype:

IgG

### Purification:

Affinity purification

## Protein Background

This gene encodes an isoform of the alpha subunit of the elongation factor-1 complex, which is responsible for the enzymatic delivery of aminoacyl tRNAs to the ribosome. This isoform (alpha 1) is expressed in brain, placenta, lung, liver, kidney, and pancreas, and the other isoform (alpha 2) is expressed in brain, heart and skeletal muscle. This isoform is identified as an autoantigen in 66% of patients with Felty syndrome. This gene has been found to have multiple copies on many chromosomes, some of which, if not all, represent different pseudogenes. [provided by RefSeq, Jul 2008]

## Immunogen information

### Gene ID:

1915

### Uniprot

P68104

### Synonyms:

CCS-3; CCS3; EE1A1; EEF-1; EEF1A; EF-Tu; EF1A; GRAF-1EF; HNGC:16303; LENG7; PT11; eEF1A-1

### Immunogen:

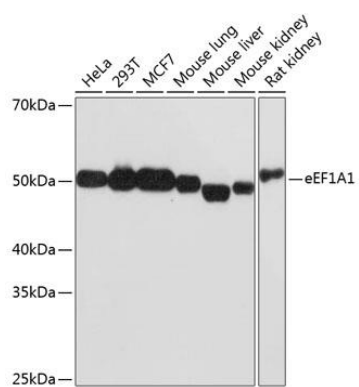
A synthesized peptide derived from human eEF1A1

### Storage:

Store at -20°C. Avoid freeze / thaw cycles. Buffer: PBS with 0.02% sodium azide, 0.05% BSA, 50% glycerol, pH7.3.

## Product Images

---



Western blot - eEF1A1 Rabbit mAb (CAB11545)