

# [KO Validated] RhoGDI Rabbit Monoclonal Antibody

## CAB11556



### Product Information

**Size:**

20uL, 50uL, 100uL, 200uL

**Observed MW:**

26kDa

**Calculated MW:**

26kDa

**Applications:**

WB

**Reactivity:**

Human, Mouse, Rat

### Protein Background

This gene encodes a protein that plays a key role in the regulation of signaling through Rho GTPases. The encoded protein inhibits the disassociation of Rho family members from GDP (guanine diphosphate), thereby maintaining these factors in an inactive state. Activity of this protein is important in a variety of cellular processes, and expression of this gene may be altered in tumors. Mutations in this gene have been found in individuals with nephrotic syndrome, type 8. Alternate splicing results in multiple transcript variants. [provided by RefSeq, Jul 2014]

### Immunogen information

**Gene ID:**

396

**Uniprot**

P52565

**Synonyms:**

GDIA1; HEL-S-47e; NPHS8; RHOGDI; RHOGDI-1

### Antibody Information

**Recommended dilutions:**

WB 1:500 - 1:2000

**Source:**

Rabbit

**Isotype:**

IgG

**Purification:**

Affinity purification

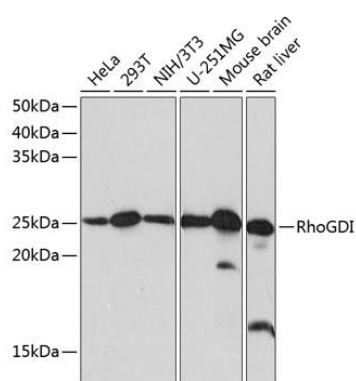
**Immunogen:**

A synthesized peptide derived from human RhoGDI

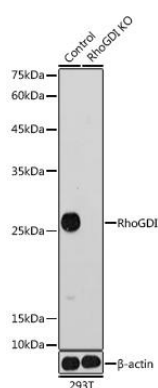
**Storage:**

Store at -20°C. Avoid freeze / thaw cycles. Buffer: PBS with 0.02% sodium azide, 0.05% BSA, 50% glycerol, pH7.3.

## Product Images



Western blot analysis of extracts of various cell lines, using RhoGDI Rabbit mAb (CAB11556) at 1:1000 dilution. Secondary antibody: HRP Goat Anti-Rabbit IgG (H+L) (CABS014) at 1:10000 dilution. Lysates/proteins: 25ug per lane. Blocking buffer: 3% nonfat dry milk in TBST. Detection: ECL Basic Kit (CABM00020). Exposure time: 10s.



Western blot analysis of extracts from normal (control) and RhoGDI knockout (KO) 293T cells, using RhoGDI antibody (CAB11556) at 1:1000 dilution. Secondary antibody: HRP Goat Anti-Rabbit IgG (H+L) (CABS014) at 1:10000 dilution. Lysates/proteins: 25ug per lane. Blocking buffer: 3% nonfat dry milk in TBST. Detection: ECL Basic Kit (CABM00020). Exposure time: 30s.