

Glutathione Synthetase Rabbit Monoclonal Antibody

CAB11557



Product Information

Size:

20uL, 50uL, 100uL, 200uL

Observed MW:

52KDa

Calculated MW:

52kDa

Applications:

WB IF

Reactivity:

Human, Mouse, Rat

Protein Background

Glutathione is important for a variety of biological functions, including protection of cells from oxidative damage by free radicals, detoxification of xenobiotics, and membrane transport. The protein encoded by this gene functions as a homodimer to catalyze the second step of glutathione biosynthesis, which is the ATP-dependent conversion of gamma-L-glutamyl-L-cysteine to glutathione. Defects in this gene are a cause of glutathione synthetase deficiency. [provided by RefSeq, Jul 2008]

Immunogen information

Gene ID:

2937

Uniprot

P48637

Synonyms:

GSHS; HEL-S-64p; HEL-S-88n

Antibody Information

Recommended dilutions:

WB 1:500 - 1:2000 IF 1:50 - 1:200

Source:

Rabbit

Isotype:

IgG

Purification:

Affinity purification

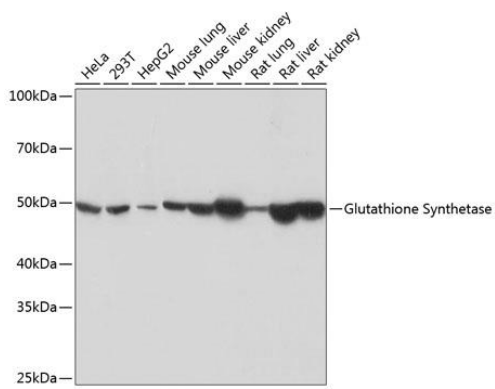
Immunogen:

A synthesized peptide derived from human Glutathione Synthetase

Storage:

Store at -20°C. Avoid freeze / thaw cycles. Buffer: PBS with 0.02% sodium azide, 0.05% BSA, 50% glycerol, pH7.3.

Product Images



Western blot - Glutathione Synthetase Rabbit mAb (CAB11557)