

[KO Validated] KDM1 Rabbit Polyclonal Antibody



CAB1156

Product Information

Size:

20uL, 50uL, 100uL, 200uL

Observed MW:

117kDa

Calculated MW:

92kDa/95kDa

Applications:

WB IF IP

Reactivity:

Human, Mouse, Rat

Protein Background

This gene encodes a nuclear protein containing a SWIRM domain, a FAD-binding motif, and an amine oxidase domain. This protein is a component of several histone deacetylase complexes, though it silences genes by functioning as a histone demethylase. Alternative splicing results in multiple transcript variants.

Immunogen information

Gene ID:

23028

Uniprot

O60341

Synonyms:

KDM1A; AOF2; BHC110; CPRF; KDM1; LSD1; KDM1

Antibody Information

Recommended dilutions:

WB 1:500 - 1:2000 IF 1:50 -
1:100 IP 1:50 - 1:100

Source:

Rabbit

Isotype:

IgG

Purification:

Affinity purification

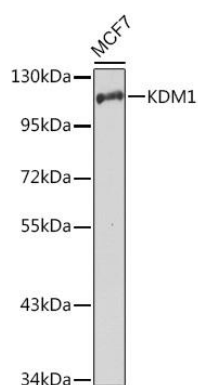
Immunogen:

Recombinant fusion protein containing a sequence corresponding to amino acids 130-380 of human KDM1 (NP_055828.2).

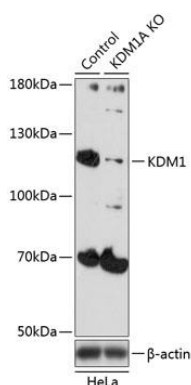
Storage:

Store at -20°C. Avoid freeze / thaw cycles. Buffer: PBS with 0.02% sodium azide, 50% glycerol, pH7.3.

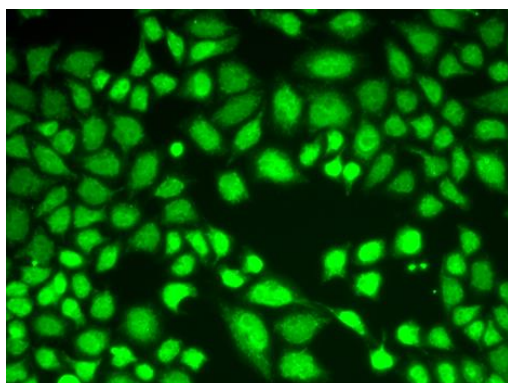
Product Images



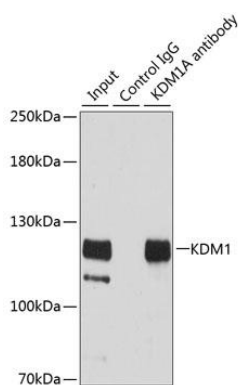
Western blot analysis of extracts of MCF7 cells, using KDM1 antibody (CAB1156) at 1:1000 dilution. Secondary antibody: HRP Goat Anti-Rabbit IgG (H+L) (CABS014) at 1:10000 dilution. Lysates/proteins: 25ug per lane. Blocking buffer: 3% nonfat dry milk in TBST. Detection: ECL Basic Kit (CABM00020).



Western blot analysis of extracts from normal (control) and KDM1 knockout (KO) HeLa cells, using KDM1 antibody (CAB1156) at 1:500 dilution. Secondary antibody: HRP Goat Anti-Rabbit IgG (H+L) (CABS014) at 1:10000 dilution. Lysates/proteins: 25ug per lane. Blocking buffer: 3% nonfat dry milk in TBST. Detection: ECL Basic Kit (CABM00020). Exposure time: 90s.



Immunofluorescence analysis of A549 cells using KDM1 antibody (CAB1156).



Immunoprecipitation analysis of 200ug extracts of HeLa cells using 3ug KDM1 antibody (CAB1156). Western blot was performed from the immunoprecipitate using KDM1 antibody (CAB1156) at a dilution of 1:500.