

TPM1 Rabbit Polyclonal Antibody



CAB1157

Product Information

Size:

20uL, 50uL, 100uL, 200uL

Observed MW:

36kDa

Calculated MW:

26kDa/28kDa/32kDa

Applications:

WB IHC IF

Reactivity:

Human, Mouse, Rat,
Zebrafish

Antibody Information

Recommended dilutions:

WB 1:500 - 1:2000 IHC 1:50
- 1:200 IF 1:50 - 1:200

Source:

Rabbit

Isotype:

IgG

Purification:

Affinity purification

Protein Background

This gene is a member of the tropomyosin family of highly conserved, widely distributed actin-binding proteins involved in the contractile system of striated and smooth muscles and the cytoskeleton of non-muscle cells. Tropomyosin is composed of two alpha-helical chains arranged as a coiled-coil. It is polymerized end to end along the two grooves of actin filaments and provides stability to the filaments. The encoded protein is one type of alpha helical chain that forms the predominant tropomyosin of striated muscle, where it also functions in association with the troponin complex to regulate the calcium-dependent interaction of actin and myosin during muscle contraction. In smooth muscle and non-muscle cells, alternatively spliced transcript variants encoding a range of isoforms have been described. Mutations in this gene are associated with type 3 familial hypertrophic cardiomyopathy.

Immunogen information

Gene ID:

7168

Uniprot

P09493

Synonyms:

TPM1; C15orf13; CMD1Y; CMH3; HEL-S-265; HTM-alpha; LVNC9;
TMSA

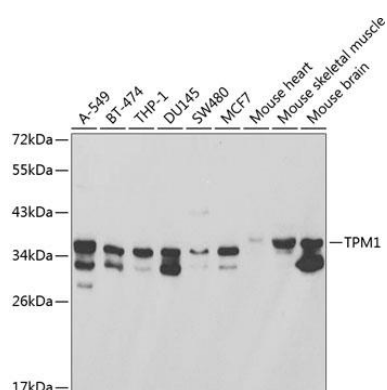
Immunogen:

Recombinant fusion protein containing a sequence corresponding to amino acids 1-245 of human TPM1 (NP_001018008.1).

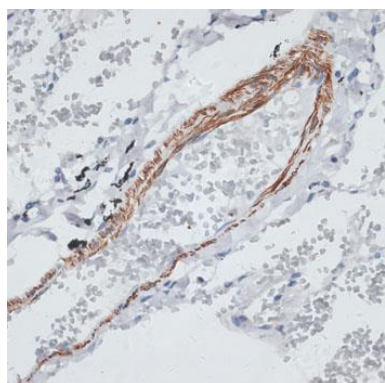
Storage:

Store at -20°C. Avoid freeze / thaw cycles. Buffer: PBS with 0.02% sodium azide, 50% glycerol, pH7.3.

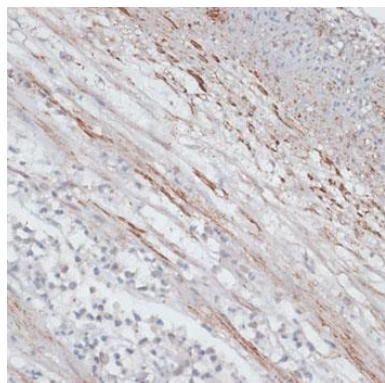
Product Images



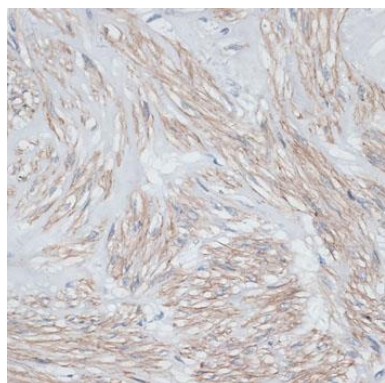
Western blot analysis of extracts of various cell lines, using TPM1 antibody (CAB1157) at 1:1000 dilution. Secondary antibody: HRP Goat Anti-Rabbit IgG (H+L) (CABS014) at 1:10000 dilution. Lysates/proteins: 25ug per lane. Blocking buffer: 3% nonfat dry milk in TBST.



Immunohistochemistry of paraffin-embedded human lung using TPM1 antibody (CAB1157) at dilution of 1:100 (40x lens).



Immunohistochemistry of paraffin-embedded human appendix using TPM1 antibody (CAB1157) at dilution of 1:100 (40x lens).



Immunohistochemistry of paraffin-embedded human uterus using TPM1 antibody (CAB1157) at dilution of 1:100 (40x lens).