

# CHD4 Rabbit Polyclonal Antibody



CAB11574

## Product Information

### Size:

20uL, 50uL, 100uL, 200uL

### Observed MW:

280kDa

### Calculated MW:

218kDa/220kDa

### Applications:

WB IHC IF

### Reactivity:

Human, Mouse, Rat

## Protein Background

The product of this gene belongs to the SNF2/RAD54 helicase family. It represents the main component of the nucleosome remodeling and deacetylase complex and plays an important role in epigenetic transcriptional repression. Patients with dermatomyositis develop antibodies against this protein. Somatic mutations in this gene are associated with serous endometrial tumors. Alternative splicing results in multiple transcript variants encoding different isoforms.

## Immunogen information

### Gene ID:

1108

### Uniprot

Q14839

### Synonyms:

CHD4; CHD-4; Mi-2b; Mi2-BETA; SIHIWES

## Antibody Information

### Recommended dilutions:

WB 1:500 - 1:2000 IHC

1:100 - 1:200 IF 1:50 -

1:200

### Source:

Rabbit

### Isotype:

IgG

### Purification:

Affinity purification

### Immunogen:

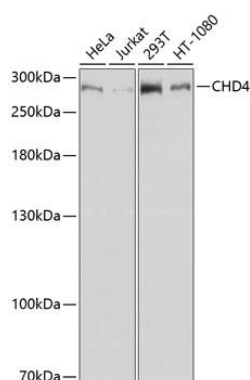
Recombinant fusion protein containing a sequence corresponding to amino acids 1520-1690 of human CHD4 (NP\_001264.2).

### Storage:

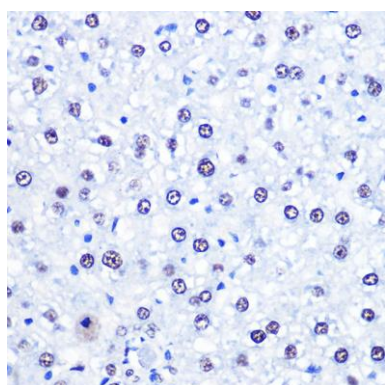
Store at -20°C. Avoid freeze / thaw cycles. Buffer: PBS with 0.02% sodium azide, 50% glycerol, pH7.3.

## Product Images

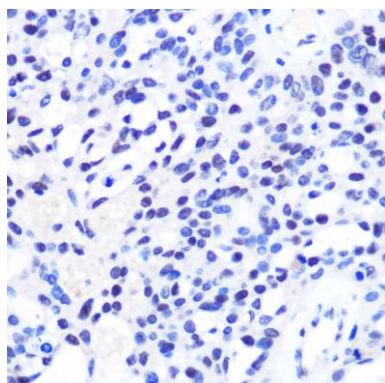
---



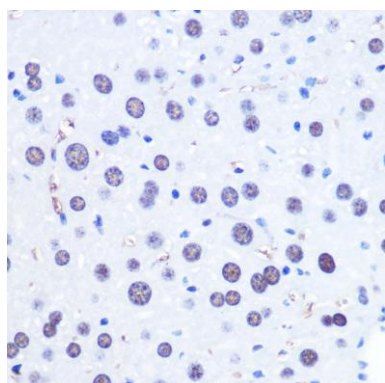
Western blot analysis of extracts of various cell lines, using CHD4 antibody (CAB11574) at 1:1000 dilution. Secondary antibody: HRP Goat Anti-Rabbit IgG (H+L) (CABS014) at 1:10000 dilution. Lysates/proteins: 25ug per lane. Blocking buffer: 3% nonfat dry milk in TBST. Detection: ECL Basic Kit (CABM00020). Exposure time: 30s.



Immunohistochemistry of paraffin-embedded Rat liver using CHD4 antibody (CAB11574) at dilution of 1:100 (40x lens).



Immunohistochemistry of paraffin-embedded Human oophoroma using CHD4 antibody (CAB11574) at dilution of 1:100 (40x lens).



Immunohistochemistry of paraffin-embedded Mouse liver using CHD4 antibody (CAB11574) at dilution of 1:100 (40x lens).