

EGFR Rabbit Polyclonal Antibody



CAB11575

Product Information

Size:

20uL, 50uL, 100uL, 200uL

Observed MW:

180kDa

Calculated MW:

44kDa/69kDa/77kDa/134kDa

Applications:

WB IHC IF

Reactivity:

Human, Mouse, Rat

Protein Background

The protein encoded by this gene is a transmembrane glycoprotein that is a member of the protein kinase superfamily. This protein is a receptor for members of the epidermal growth factor family. EGFR is a cell surface protein that binds to epidermal growth factor. Binding of the protein to a ligand induces receptor dimerization and tyrosine autophosphorylation and leads to cell proliferation. Mutations in this gene are associated with lung cancer.

Immunogen information

Gene ID:

1956

Uniprot

P00533

Synonyms:

EGFR; ERBB; ERBB1; HER1; NISBD2; PIG61; mENA

Antibody Information

Recommended dilutions:

WB 1:500 - 1:2000 IHC 1:50
- 1:200 IF 1:50 - 1:200

Source:

Rabbit

Isotype:

IgG

Purification:

Affinity purification

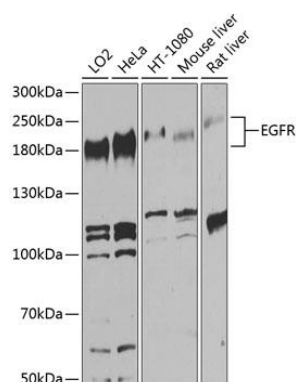
Immunogen:

A synthetic peptide corresponding to a sequence within amino acids 960-1060 of human EGFR (NP_005219.2).

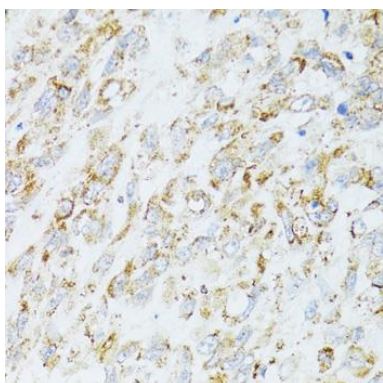
Storage:

Store at -20°C. Avoid freeze / thaw cycles. Buffer: PBS with 0.02% sodium azide, 50% glycerol, pH7.3.

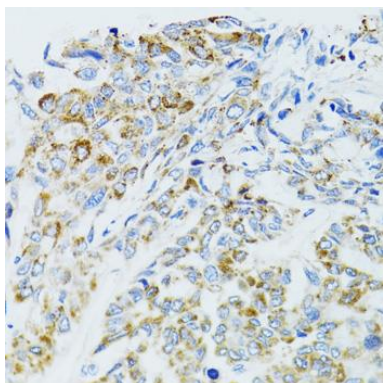
Product Images



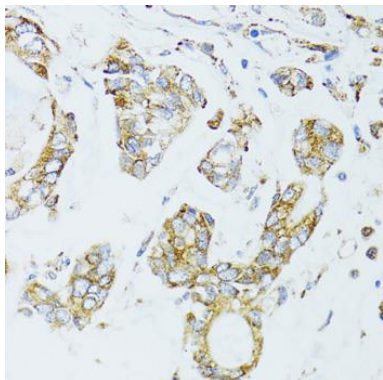
Western blot analysis of extracts of various cell lines, using EGFR antibody (CAB11575) at 1:1000 dilution. Secondary antibody: HRP Goat Anti-Rabbit IgG (H+L) (CABS014) at 1:10000 dilution. Lysates/proteins: 25ug per lane. Blocking buffer: 3% nonfat dry milk in TBST. Detection: ECL Basic Kit (CABM00020). Exposure time: 60s.



Immunohistochemistry of paraffin-embedded human lung cancer using EGFR antibody (CAB11575) at dilution of 1:100 (40x lens).



Immunohistochemistry of paraffin-embedded human liver cancer using EGFR antibody (CAB11575) at dilution of 1:100 (40x lens).



Immunohistochemistry of paraffin-embedded human gastric cancer using EGFR antibody (CAB11575) at dilution of 1:100 (40x lens).