

# [KO Validated] EGFR Rabbit Polyclonal Antibody



CAB11577

## Product Information

### Size:

20uL, 50uL, 100uL, 200uL

### Observed MW:

175kDa

### Calculated MW:

44kDa/69kDa/77kDa/134kDa

### Applications:

WB IF IP

### Reactivity:

Human, Mouse, Rat

## Protein Background

The protein encoded by this gene is a transmembrane glycoprotein that is a member of the protein kinase superfamily. This protein is a receptor for members of the epidermal growth factor family. EGFR is a cell surface protein that binds to epidermal growth factor. Binding of the protein to a ligand induces receptor dimerization and tyrosine autophosphorylation and leads to cell proliferation. Mutations in this gene are associated with lung cancer.

## Immunogen information

### Gene ID:

1956

### Uniprot

P00533

### Synonyms:

EGFR; ERBB; ERBB1; HER1; NISBD2; PIG61; mENA

## Antibody Information

### Recommended dilutions:

WB 1:500 - 1:2000 IF 1:50 -  
1:200 IP 1:50 - 1:100

### Source:

Rabbit

### Isotype:

IgG

### Purification:

Affinity purification

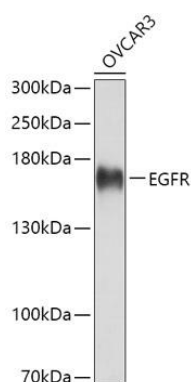
### Immunogen:

Recombinant fusion protein containing a sequence corresponding to amino acids 1021-1210 of human EGFR (NP\_005219.2).

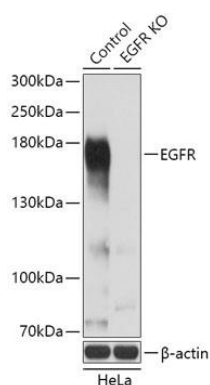
### Storage:

Store at -20°C. Avoid freeze / thaw cycles. Buffer: PBS with 0.02% sodium azide, 50% glycerol, pH7.3.

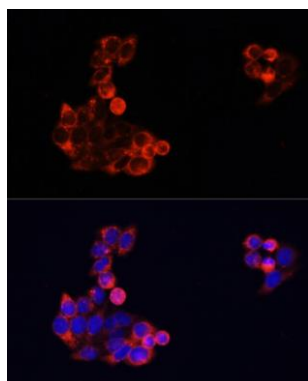
## Product Images



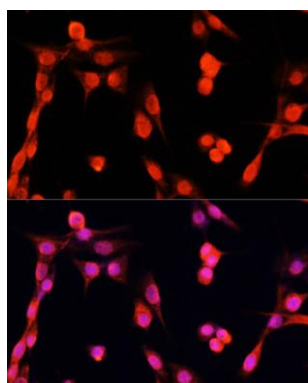
Western blot analysis of extracts of OVCAR3 cells, using EGFR antibody (CAB11577) at 1:3000 dilution. Secondary antibody: HRP Goat Anti-Rabbit IgG (H+L) (CABS014) at 1:10000 dilution. Lysates/proteins: 25ug per lane. Blocking buffer: 3% nonfat dry milk in TBST. Detection: ECL Basic Kit (CABM00020). Exposure time: 3s.



Western blot analysis of extracts from normal (control) and EGFR knockout (KO) HeLa cells, using EGFR antibody (CAB11577) at 1:3000 dilution. Secondary antibody: HRP Goat Anti-Rabbit IgG (H+L) (CABS014) at 1:10000 dilution. Lysates/proteins: 25ug per lane. Blocking buffer: 3% nonfat dry milk in TBST. Detection: ECL Basic Kit (CABM00020). Exposure time: 3s.



Immunofluorescence analysis of HeLa cells using EGFR antibody (CAB11577) at dilution of 1:100. Blue: DAPI for nuclear staining.



Immunofluorescence analysis of NIH/3T3 cells using EGFR antibody (CAB11577) at dilution of 1:100. Blue: DAPI for nuclear staining.