

# eIF4A1 Rabbit Monoclonal Antibody



CAB11584

---

## Product Information

### Size:

20uL, 50uL, 100uL, 200uL

### Observed MW:

46KDa

### Calculated MW:

46kDa

### Applications:

WB IF

### Reactivity:

Human, Mouse, Rat

## Antibody Information

### Recommended dilutions:

WB 1:500 - 1:2000 IF 1:50 - 1:200

### Source:

Rabbit

### Isotype:

IgG

### Purification:

Affinity purification

## Protein Background

### Immunogen information

#### Gene ID:

1973

#### Uniprot

P60842

#### Synonyms:

DDX2A; EIF-4A; EIF4A; eIF-4A-I; eIF4A-I

#### Immunogen:

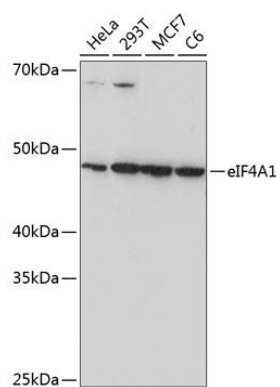
A synthesized peptide derived from human eIF4A1

#### Storage:

Store at -20°C. Avoid freeze / thaw cycles. Buffer: PBS with 0.02% sodium azide, 0.05% BSA, 50% glycerol, pH7.3.

## Product Images

---



Western blot - eIF4A1 Rabbit mAb (CAB11584)