

# DIAPH1 Rabbit Monoclonal Antibody



CAB11596

---

## Product Information

### Size:

20uL, 50uL, 100uL, 200uL

### Observed MW:

160kDa

### Calculated MW:

155kDa

### Applications:

WB

### Reactivity:

Human, Mouse, Rat

## Protein Background

This gene is a homolog of the Drosophila diaphanous gene, and has been linked to autosomal dominant, fully penetrant, nonsyndromic sensorineural progressive low-frequency hearing loss. Actin polymerization involves proteins known to interact with diaphanous protein in Drosophila and mouse. It has therefore been speculated that this gene may have a role in the regulation of actin polymerization in hair cells of the inner ear. Alternatively spliced transcript variants encoding distinct isoforms have been found for this gene. [provided by RefSeq, Jul 2008]

## Immunogen information

### Gene ID:

1729

### Uniprot

O60610

### Synonyms:

DFNA1; DIA1; DRF1; LFHL1; SCBMS; hDIA1

## Antibody Information

### Recommended dilutions:

WB 1:500 - 1:2000

### Source:

Rabbit

### Isotype:

IgG

### Purification:

Affinity purification

### Immunogen:

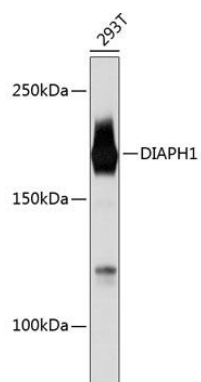
A synthesized peptide derived from human DIAPH1

### Storage:

Store at -20°C. Avoid freeze / thaw cycles. Buffer: PBS with 0.02% sodium azide, 0.05% BSA, 50% glycerol, pH7.3.

## Product Images

---



Western blot - DIAPH1 Rabbit mAb (CAB11596)