

# Monoamine Oxidase B Rabbit Monoclonal Antibody

## CAB11597



---

### Product Information

**Size:**

20uL, 50uL, 100uL, 200uL

**Observed MW:**

59KDa

**Calculated MW:**

59kDa

**Applications:**

WB IHC

**Reactivity:**

Human, Mouse, Rat

### Protein Background

The protein encoded by this gene belongs to the flavin monoamine oxidase family. It is a enzyme located in the mitochondrial outer membrane. It catalyzes the oxidative deamination of biogenic and xenobiotic amines and plays an important role in the metabolism of neuroactive and vasoactive amines in the central nervous system and peripheral tissues. This protein preferentially degrades benzylamine and phenylethylamine. [provided by RefSeq, Jul 2008]

### Immunogen information

**Gene ID:**

4129

**Uniprot**

P27338

**Synonyms:**

### Antibody Information

**Recommended dilutions:**

WB 1:500 - 1:2000 IHC 1:50 - 1:200

**Source:**

Rabbit

**Isotype:**

IgG

**Purification:**

Affinity purification

**Immunogen:**

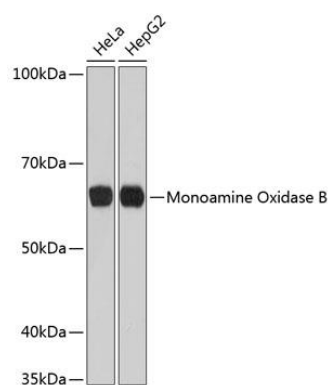
A synthesized peptide derived from human Monoamine Oxidase B

**Storage:**

Store at -20°C. Avoid freeze / thaw cycles. Buffer: PBS with 0.02% sodium azide, 0.05% BSA, 50% glycerol, pH7.3.

## Product Images

---



Western blot - Monoamine Oxidase B Rabbit mAb (CAB11597)