

ACTN1 Rabbit Polyclonal Antibody



CAB1160

Product Information

Size:

20uL, 50uL, 100uL, 200uL

Observed MW:

105kDa

Calculated MW:

102kDa/103kDa/105kDa/107kDa

Applications:

WB IHC

Reactivity:

Human, Mouse, Monkey

Antibody Information

Recommended dilutions:

WB 1:500 - 1:2000 IHC 1:50 - 1:200

Source:

Rabbit

Isotype:

IgG

Purification:

Affinity purification

Protein Background

Alpha actinins belong to the spectrin gene superfamily which represents a diverse group of cytoskeletal proteins, including the alpha and beta spectrins and dystrophins. Alpha actinin is an actin-binding protein with multiple roles in different cell types. In nonmuscle cells, the cytoskeletal isoform is found along microfilament bundles and adherens-type junctions, where it is involved in binding actin to the membrane. In contrast, skeletal, cardiac, and smooth muscle isoforms are localized to the Z-disc and analogous dense bodies, where they help anchor the myofibrillar actin filaments. This gene encodes a nonmuscle, cytoskeletal, alpha actinin isoform and maps to the same site as the structurally similar erythroid beta spectrin gene. Three transcript variants encoding different isoforms have been found for this gene.

Immunogen information

Gene ID:

87

Uniprot

P12814

Synonyms:

ACTN1; BDPLT15

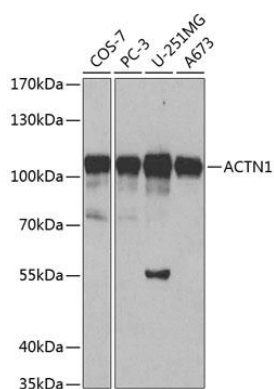
Immunogen:

Recombinant fusion protein containing a sequence corresponding to amino acids 1-330 of human ACTN1 (NP_001123477.1).

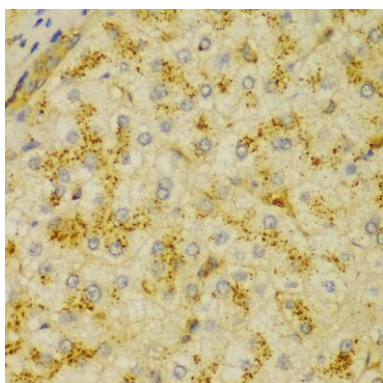
Storage:

Store at -20°C. Avoid freeze / thaw cycles. Buffer: PBS with 0.02% sodium azide, 50% glycerol, pH7.3.

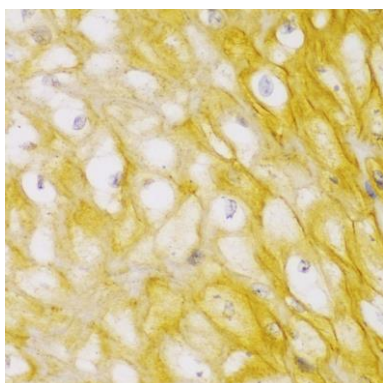
Product Images



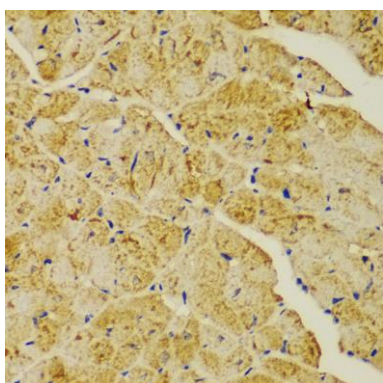
Western blot analysis of extracts of various cell lines, using ACTN1 antibody (CAB1160) at 1:500 dilution. Secondary antibody: HRP Goat Anti-Rabbit IgG (H+L) (CABS014) at 1:10000 dilution. Lysates/proteins: 25ug per lane. Blocking buffer: 3% nonfat dry milk in TBST.



Immunohistochemistry of paraffin-embedded human liver cancer using ACTN1 antibody (CAB1160) at dilution of 1:100 (40x lens).



Immunohistochemistry of paraffin-embedded human esophagus using ACTN1 antibody (CAB1160) at dilution of 1:100 (40x lens).



Immunohistochemistry of paraffin-embedded mouse heart using ACTN1 antibody (CAB1160) at dilution of 1:100 (40x lens).