

CALM3 Rabbit Polyclonal Antibody



CAB1161

Product Information

Size:

20uL, 50uL, 100uL, 200uL

Observed MW:

17kDa

Calculated MW:

17kDa

Applications:

WB IHC IF

Reactivity:

Human, Mouse, Rat

Antibody Information

Recommended dilutions:

WB 1:500 - 1:2000 IHC 1:50
- 1:100 IF 1:50 - 1:100

Source:

Rabbit

Isotype:

IgG

Purification:

Affinity purification

Protein Background

Immunogen information

Gene ID:

808

Uniprot

P62158

Synonyms:

CALM3; CaM; CaMIII; HEL-S-72; PHKD; PHKD3

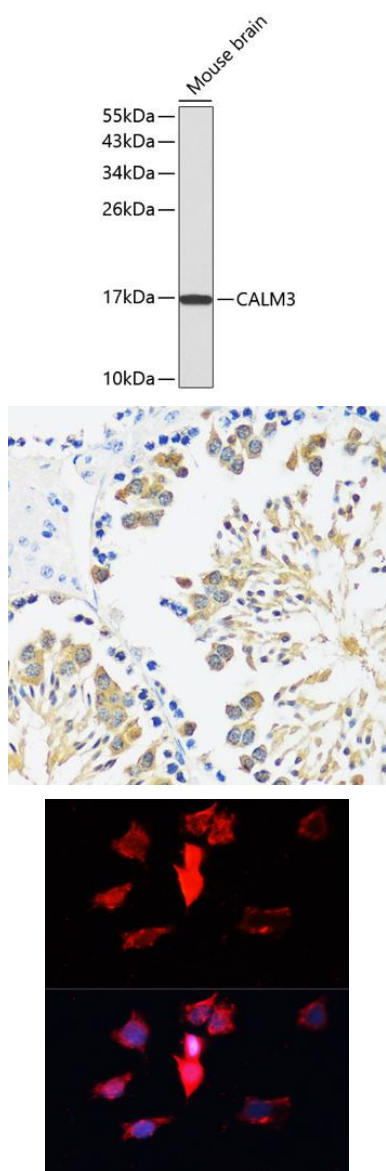
Immunogen:

A synthetic peptide corresponding to a sequence within amino acids 1-100 of human CALM3 (NP_005175.2).

Storage:

Store at -20°C. Avoid freeze / thaw cycles. Buffer: PBS with 0.02% sodium azide, 50% glycerol, pH7.3.

Product Images



Western blot analysis of extracts of mouse brain, using CALM3 antibody (CAB1161). Secondary antibody: HRP Goat Anti-Rabbit IgG (H+L) (CABS014) at 1:10000 dilution. Lysates/proteins: 25ug per lane. Blocking buffer: 3% nonfat dry milk in TBST.

Immunohistochemistry of paraffin-embedded mouse testis using CALM3 antibody (CAB1161) at dilution of 1:100 (40x lens).

Immunofluorescence analysis of HeLa cells using CALM3 antibody (CAB1161) at dilution of 1:100. Blue: DAPI for nuclear staining.