

NLRP7 Rabbit Polyclonal Antibody



CAB11627

Product Information

Size:

20uL, 50uL, 100uL, 200uL

Observed MW:

110kDa

Calculated MW:

111kDa/114kDa/118kDa

Applications:

WB

Reactivity:

Human

Protein Background

This gene encodes a member of the NACHT, leucine rich repeat, and PYD containing (NLRP) protein family. It has an N-terminal pyrin domain, followed by a NACHT domain, a NACHT-associated domain (NAD), and a C-terminal leucine-rich repeat (LRR) region. NLRP proteins are implicated in the activation of proinflammatory caspases through multiprotein complexes called inflammasomes. This gene may act as a feedback regulator of caspase-1-dependent interleukin 1-beta secretion. Alternative splicing results in multiple transcript variants encoding different isoforms.

Immunogen information

Gene ID:

199713

Uniprot

Q8WX94

Synonyms:

NLRP7; CLR19.4; HYDM; NALP7; NOD12; PAN7; PYPAF3

Antibody Information

Recommended dilutions:

WB 1:500 - 1:2000

Source:

Rabbit

Isotype:

IgG

Purification:

Affinity purification

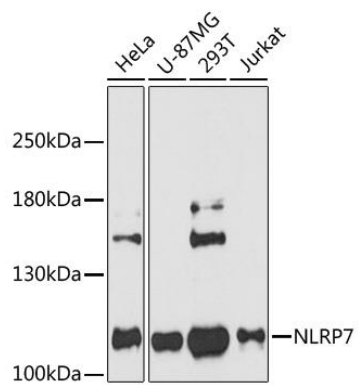
Immunogen:

Recombinant fusion protein containing a sequence corresponding to amino acids 800-1000 of human NLRP7 (NP_631915.2).

Storage:

Store at -20°C. Avoid freeze / thaw cycles. Buffer: PBS with 0.02% sodium azide, 50% glycerol, pH7.3.

Product Images



Western blot analysis of extracts of various cell lines, using NLRP7 Antibody (CAB11627) at 1:3000 dilution. Secondary antibody: HRP Goat Anti-Rabbit IgG (H+L) (CABS014) at 1:10000 dilution. Lysates/proteins: 25ug per lane. Blocking buffer: 3% nonfat dry milk in TBST. Detection: ECL Basic Kit (CABM00020). Exposure time: 40s.