

# PRIM2 Rabbit Polyclonal Antibody



CAB11633

---

## Product Information

### Size:

20uL, 50uL, 100uL, 200uL

### Observed MW:

59kDa

### Calculated MW:

19kDa/58kDa

### Applications:

WB

### Reactivity:

Human, Mouse

## Protein Background

This gene encodes the 58 kilodalton subunit of DNA primase, an enzyme that plays a key role in the replication of DNA. The encoded protein forms a heterodimer with a 49 kilodalton subunit. This heterodimer functions as a DNA-directed RNA polymerase to synthesize small RNA primers that are used to create Okazaki fragments on the lagging strand of the DNA. Alternative splicing of this gene results in multiple transcript variants. This gene has a related pseudogene, which is also present on chromosome 6.

## Immunogen information

### Gene ID:

5558

### Uniprot

P49643

### Synonyms:

PRIM2; PRIM2A; p58

## Antibody Information

### Recommended dilutions:

WB 1:500 - 1:2000

### Source:

Rabbit

### Isotype:

IgG

### Purification:

Affinity purification

### Immunogen:

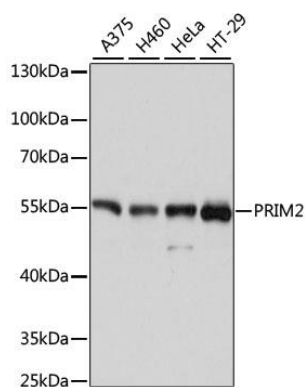
Recombinant fusion protein containing a sequence corresponding to amino acids 1-170 of human PRIM2 (NP\_000938.2).

### Storage:

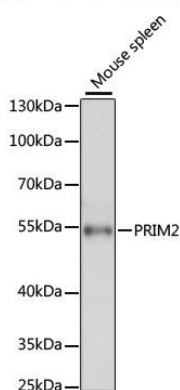
Store at -20°C. Avoid freeze / thaw cycles. Buffer: PBS with 0.02% sodium azide, 50% glycerol, pH7.3.

## Product Images

---



Western blot analysis of extracts of various cell lines, using PRIM2 antibody (CAB11633) at 1:3000 dilution. Secondary antibody: HRP Goat Anti-Rabbit IgG (H+L) (CABS014) at 1:10000 dilution. Lysates/proteins: 25ug per lane. Blocking buffer: 3% nonfat dry milk in TBST. Detection: ECL Basic Kit (CABM00020). Exposure time: 1s.



Western blot analysis of extracts of mouse spleen, using PRIM2 antibody (CAB11633) at 1:3000 dilution. Secondary antibody: HRP Goat Anti-Rabbit IgG (H+L) (CABS014) at 1:10000 dilution. Lysates/proteins: 25ug per lane. Blocking buffer: 3% nonfat dry milk in TBST. Detection: ECL Basic Kit (CABM00020). Exposure time: 10s.