

Collagen X Rabbit Monoclonal Antibody



CAB11645

Product Information

Size:

20uL, 50uL, 100uL, 200uL

Observed MW:

66KDa

Calculated MW:

66kDa

Applications:

WB

Reactivity:

Mouse, Rat

Protein Background

This gene encodes the alpha chain of type X collagen, a short chain collagen expressed by hypertrophic chondrocytes during endochondral ossification. Unlike type VIII collagen, the other short chain collagen, type X collagen is a homotrimer. Mutations in this gene are associated with Schmid type metaphyseal chondrodysplasia (SMCD) and Japanese type spondylometaphyseal dysplasia (SMD). [provided by RefSeq, Jul 2008]

Immunogen information

Gene ID:

1300

Uniprot

Q03692

Synonyms:

Antibody Information

Recommended dilutions:

WB 1:500 - 1:2000

Source:

Rabbit

Isotype:

IgG

Purification:

Affinity purification

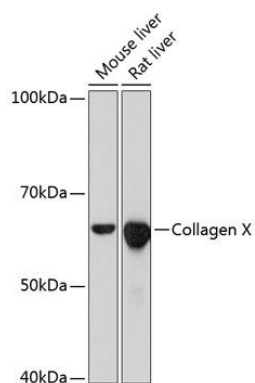
Immunogen:

A synthesized peptide derived from human Collagen X

Storage:

Store at -20°C. Avoid freeze / thaw cycles. Buffer: PBS with 0.02% sodium azide, 0.05% BSA, 50% glycerol, pH7.3.

Product Images



Western blot - Collagen X Rabbit mAb (CAB11645)