

# [KO Validated] CD168 Rabbit Monoclonal Antibody

CAB11666



## Product Information

### Size:

20uL, 50uL, 100uL, 200uL

### Observed MW:

84KDa

### Calculated MW:

85kDa

### Applications:

WB IHC

### Reactivity:

Human, Mouse

## Protein Background

The protein encoded by this gene is involved in cell motility. It is expressed in breast tissue and together with other proteins, it forms a complex with BRCA1 and BRCA2, thus is potentially associated with higher risk of breast cancer. Alternatively spliced transcript variants encoding different isoforms have been noted for this gene. [provided by RefSeq, Dec 2008]

## Immunogen information

### Gene ID:

3161

### Uniprot

O75330

### Synonyms:

CD168; IHABP; RHAMM

## Antibody Information

### Recommended dilutions:

WB 1:500 - 1:2000 IHC 1:50  
- 1:200

### Source:

Rabbit

### Isotype:

IgG

### Purification:

Affinity purification

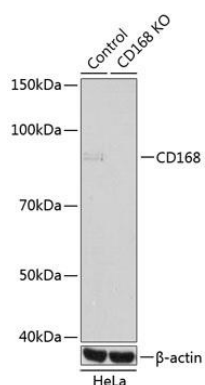
### Immunogen:

A synthesized peptide derived from human CD168

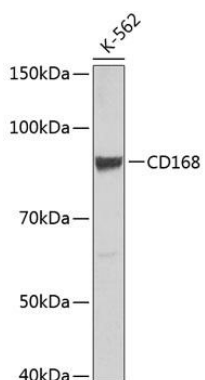
### Storage:

Store at -20°C. Avoid freeze / thaw cycles. Buffer: PBS with 0.02% sodium azide, 0.05% BSA, 50% glycerol, pH7.3.

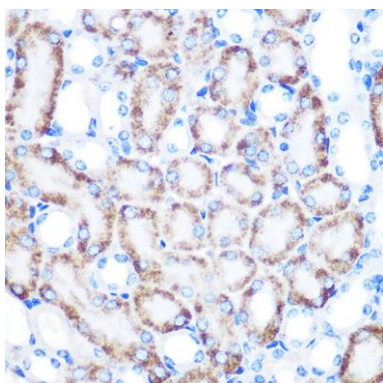
## Product Images



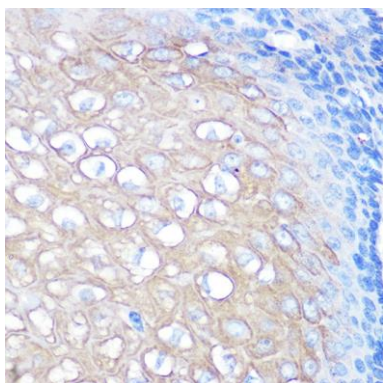
Western blot analysis of extracts from normal (control) and CD168 knockout (KO) HeLa cells, using CD168 Rabbit mAb (CAB11666) at 1:500 dilution. Secondary antibody: HRP Goat Anti-Rabbit IgG (H+L) (CABS014) at 1:10000 dilution. Lysates/proteins: 25ug per lane. Blocking buffer: 3% nonfat dry milk in TBST. Detection: ECL Basic Kit (CABM00020). Exposure time: 3min.



Western blot analysis of extracts of K-562 cells, using CD168 Rabbit mAb (CAB11666) at 1:500 dilution. Secondary antibody: HRP Goat Anti-Rabbit IgG (H+L) (CABS014) at 1:10000 dilution. Lysates/proteins: 25ug per lane. Blocking buffer: 3% nonfat dry milk in TBST. Detection: ECL Basic Kit (CABM00020). Exposure time: 3min.



Immunohistochemistry of paraffin-embedded mouse kidney using [KO Validated] CD168 Rabbit mAb (CAB11666) at dilution of 1:100 (40x lens).



Immunohistochemistry of paraffin-embedded human esophageal using [KO Validated] CD168 Rabbit mAb (CAB11666) at dilution of 1:100 (40x lens).