

# RAB11A Rabbit Polyclonal Antibody



CAB1167

---

## Product Information

### Size:

20uL, 50uL, 100uL, 200uL

### Observed MW:

24kDa

### Calculated MW:

17kDa/24kDa

### Applications:

WB IF

### Reactivity:

Human, Rat

## Protein Background

The protein encoded by this gene belongs to the Rab family of the small GTPase superfamily. It is associated with both constitutive and regulated secretory pathways, and may be involved in protein transport. Two transcript variants encoding different isoforms have been found for this gene.

## Immunogen information

### Gene ID:

8766

### Uniprot

P62491

### Synonyms:

RAB11A; YL8

## Antibody Information

### Recommended dilutions:

WB 1:500 - 1:2000 IF 1:50 - 1:200

### Source:

Rabbit

### Isotype:

IgG

### Purification:

Affinity purification

### Immunogen:

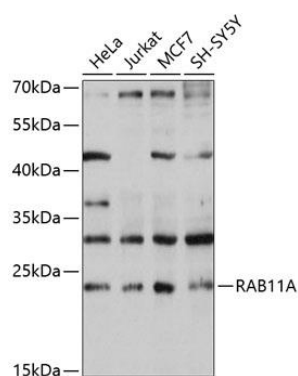
Recombinant fusion protein containing a sequence corresponding to amino acids 1-216 of human RAB11A (NP\_004654.1).

### Storage:

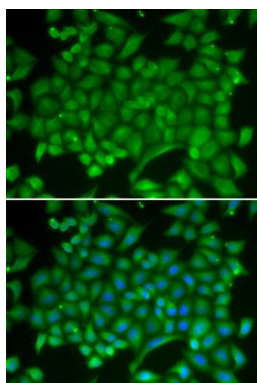
Store at -20°C. Avoid freeze / thaw cycles. Buffer: PBS with 0.02% sodium azide, 50% glycerol, pH7.3.

## Product Images

---



Western blot analysis of extracts of various cell lines, using RAB11A antibody (CAB1167) at 1:1000 dilution. Secondary antibody: HRP Goat Anti-Rabbit IgG (H+L) (CABS014) at 1:10000 dilution. Lysates/proteins: 25ug per lane. Blocking buffer: 3% nonfat dry milk in TBST. Detection: ECL Basic Kit (CABM00020). Exposure time: 10s.



Immunofluorescence analysis of MCF-7 cells using RAB11A antibody (CAB1167). Blue: DAPI for nuclear staining.