

IGFBP1 Rabbit Monoclonal Antibody



CAB11672

Product Information

Size:

20uL, 50uL, 100uL, 200uL

Observed MW:

30KDa

Calculated MW:

30kDa

Applications:

WB

Reactivity:

Human, Mouse

Protein Background

This gene is a member of the insulin-like growth factor binding protein (IGFBP) family and encodes a protein with an IGFBP domain and a thyroglobulin type-I domain. The protein binds both insulin-like growth factors (IGFs) I and II and circulates in the plasma. Binding of this protein prolongs the half-life of the IGFs and alters their interaction with cell surface receptors. [provided by RefSeq, Jul 2008]

Immunogen information

Gene ID:

3484

Uniprot

P08833

Synonyms:

AFBP; IBP1; IGF-BP25; PP12; hIGFBP-1

Antibody Information

Recommended dilutions:

WB 1:500 - 1:2000

Source:

Rabbit

Isotype:

IgG

Purification:

Affinity purification

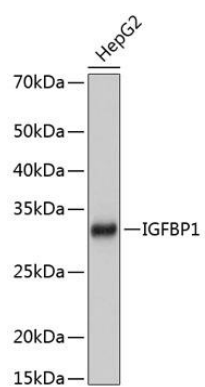
Immunogen:

A synthesized peptide derived from human IGFBP1

Storage:

Store at -20°C. Avoid freeze / thaw cycles. Buffer: PBS with 0.02% sodium azide, 0.05% BSA, 50% glycerol, pH7.3.

Product Images



Western blot - IGFBP1 Rabbit mAb (CAB11672)