

PRIM2 Rabbit Polyclonal Antibody



CAB11673

Product Information

Size:

20uL, 50uL, 100uL, 200uL

Observed MW:

59kDa

Calculated MW:

19kDa/58kDa

Applications:

WB

Reactivity:

Human, Mouse, Rat

Antibody Information

Recommended dilutions:

WB 1:500 - 1:2000

Source:

Rabbit

Isotype:

IgG

Purification:

Affinity purification

Protein Background

This gene encodes the 58 kilodalton subunit of DNA primase, an enzyme that plays a key role in the replication of DNA. The encoded protein forms a heterodimer with a 49 kilodalton subunit. This heterodimer functions as a DNA-directed RNA polymerase to synthesize small RNA primers that are used to create Okazaki fragments on the lagging strand of the DNA. Alternative splicing of this gene results in multiple transcript variants. This gene has a related pseudogene, which is also present on chromosome 6.

Immunogen information

Gene ID:

5558

Uniprot

P49643

Synonyms:

PRIM2; PRIM2A; p58

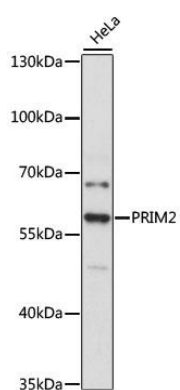
Immunogen:

Recombinant fusion protein containing a sequence corresponding to amino acids 1-170 of human PRIM2 (NP_000938.2).

Storage:

Store at -20°C. Avoid freeze / thaw cycles. Buffer: PBS with 0.02% sodium azide, 50% glycerol, pH7.3.

Product Images



Western blot analysis of extracts of HeLa cells, using PRIM2 antibody (CAB11673) at 1:3000 dilution. Secondary antibody: HRP Goat Anti-Rabbit IgG (H+L) (CABS014) at 1:10000 dilution. Lysates/proteins: 25ug per lane. Blocking buffer: 3% nonfat dry milk in TBST. Detection: ECL Basic Kit (CABM00020). Exposure time: 90s.