

# PNPT1 Rabbit Polyclonal Antibody



CAB11676

## Product Information

### Size:

20uL, 50uL, 100uL, 200uL

### Observed MW:

110kDa

### Calculated MW:

85kDa

### Applications:

WB

### Reactivity:

Human

## Protein Background

The protein encoded by this gene belongs to the evolutionary conserved polynucleotide phosphorylase family comprised of phosphate dependent 3'-to-5' exoribonucleases implicated in RNA processing and degradation. This enzyme is predominantly localized in the mitochondrial intermembrane space and is involved in import of RNA to mitochondria. Mutations in this gene have been associated with combined oxidative phosphorylation deficiency-13 and autosomal recessive nonsyndromic deafness-70. Related pseudogenes are found on chromosomes 3 and 7.

## Immunogen information

### Gene ID:

87178

### Uniprot

Q8TCS8

### Synonyms:

PNPT1; COXPD13; DFNB70; OLD35; PNPASE; old-35

## Antibody Information

### Recommended dilutions:

WB 1:500 - 1:2000

### Source:

Rabbit

### Isotype:

IgG

### Purification:

Affinity purification

### Immunogen:

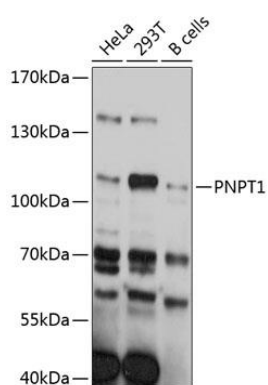
Recombinant fusion protein containing a sequence corresponding to amino acids 1-260 of human PNPT1 (NP\_149100.2).

### Storage:

Store at -20°C. Avoid freeze / thaw cycles. Buffer: PBS with 0.02% sodium azide, 50% glycerol, pH7.3.

## Product Images

---



Western blot analysis of extracts of various cell lines, using PNPT1 antibody (CAB11676) at 1:3000 dilution. Secondary antibody: HRP Goat Anti-Rabbit IgG (H+L) (CABS014) at 1:10000 dilution. Lysates/proteins: 25ug per lane. Blocking buffer: 3% nonfat dry milk in TBST. Detection: ECL Basic Kit (CABM00020). Exposure time: 10s.