

# ACSL3 Rabbit Polyclonal Antibody



CAB11679

## Product Information

### Size:

20uL, 50uL, 100uL, 200uL

### Observed MW:

75kDa

### Calculated MW:

80kDa

### Applications:

WB IHC

### Reactivity:

Human, Mouse, Rat

## Antibody Information

### Recommended dilutions:

WB 1:500 - 1:2000 IHC 1:50  
- 1:200

### Source:

Rabbit

### Isotype:

IgG

### Purification:

Affinity purification

## Protein Background

The protein encoded by this gene is an isozyme of the long-chain fatty-acid-coenzyme A ligase family. Although differing in substrate specificity, subcellular localization, and tissue distribution, all isozymes of this family convert free long-chain fatty acids into fatty acyl-CoA esters, and thereby play a key role in lipid biosynthesis and fatty acid degradation. This isozyme is highly expressed in brain, and preferentially utilizes myristate, arachidonate, and eicosapentaenoate as substrates. The amino acid sequence of this isozyme is 92% identical to that of rat homolog. Two transcript variants encoding the same protein have been found for this gene.

## Immunogen information

### Gene ID:

2181

### Uniprot

O95573

### Synonyms:

ACSL3; ACS3; FACL3; PRO2194

### Immunogen:

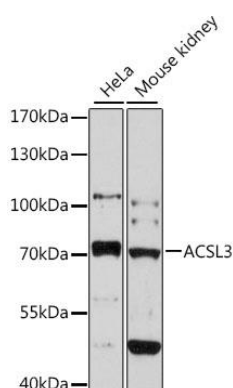
Recombinant fusion protein containing a sequence corresponding to amino acids 42-300 of human ACSL3 (NP\_004448.2).

### Storage:

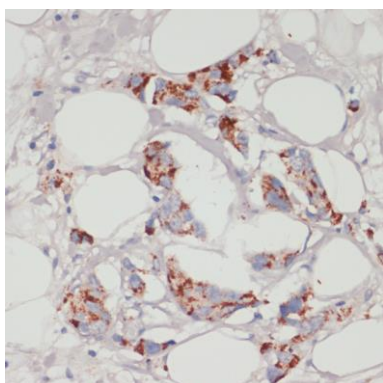
Store at -20°C. Avoid freeze / thaw cycles. Buffer: PBS with 0.02% sodium azide, 50% glycerol, pH7.3.

## Product Images

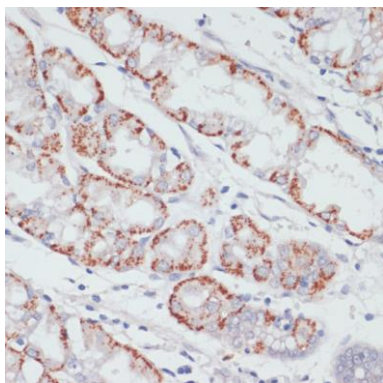
---



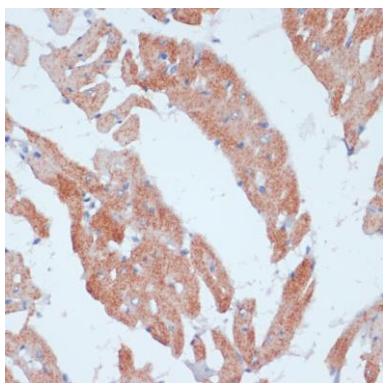
Western blot analysis of extracts of various cell lines, using ACSL3 antibody (CAB11679) at 1:3000 dilution. Secondary antibody: HRP Goat Anti-Rabbit IgG (H+L) (CABS014) at 1:10000 dilution. Lysates/proteins: 25ug per lane. Blocking buffer: 3% nonfat dry milk in TBST. Detection: ECL Enhanced Kit (CABM00021). Exposure time: 90s.



Immunohistochemistry of paraffin-embedded human mammary cancer using ACSL3 antibody (CAB11679) at dilution of 1:100 (40x lens).



Immunohistochemistry of paraffin-embedded human stomach using ACSL3 antibody (CAB11679) at dilution of 1:100 (40x lens).



Immunohistochemistry of paraffin-embedded rat heart using ACSL3 antibody (CAB11679) at dilution of 1:100 (40x lens).