

GAS2 Rabbit Polyclonal Antibody



CAB1168

Product Information

Size:

20uL, 50uL, 100uL, 200uL

Observed MW:

37kDa

Calculated MW:

15kDa/34kDa

Applications:

WB IHC IF

Reactivity:

Human, Mouse

Protein Background

The protein encoded by this gene is a caspase-3 substrate that plays a role in regulating microfilament and cell shape changes during apoptosis. It can also modulate cell susceptibility to p53-dependent apoptosis by inhibiting calpain activity. Alternative splicing results in multiple transcript variants.

Immunogen information

Gene ID:

2620

Uniprot

O43903

Synonyms:

GAS2; GAS-2

Antibody Information

Recommended dilutions:

WB 1:500 - 1:2000 IHC 1:50
- 1:200 IF 1:50 - 1:200

Source:

Rabbit

Isotype:

IgG

Purification:

Affinity purification

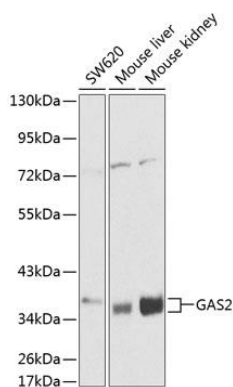
Immunogen:

Recombinant fusion protein containing a sequence corresponding to amino acids 1-100 of human GAS2 (NP_005247.1).

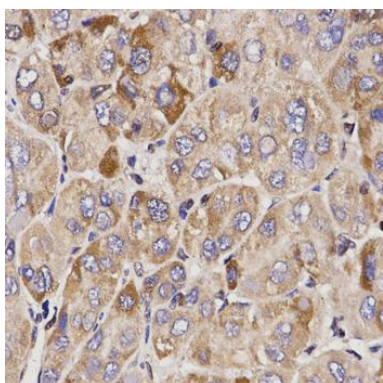
Storage:

Store at -20°C. Avoid freeze / thaw cycles. Buffer: PBS with 0.02% sodium azide, 50% glycerol, pH7.3.

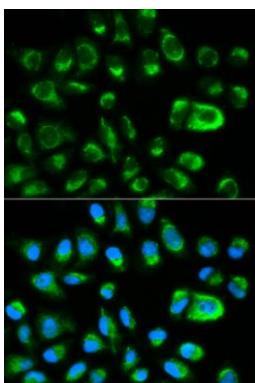
Product Images



Western blot analysis of extracts of various cell lines, using GAS2 antibody (CAB1168) at 1:1000 dilution. Secondary antibody: HRP Goat Anti-Rabbit IgG (H+L) (CABS014) at 1:10000 dilution. Lysates/proteins: 25ug per lane. Blocking buffer: 3% nonfat dry milk in TBST.



Immunohistochemistry of paraffin-embedded human liver cancer using GAS2 antibody (CAB1168) at dilution of 1:200 (40x lens).



Immunofluorescence analysis of HeLa cells using GAS2 antibody (CAB1168). Blue: DAPI for nuclear staining.