

CHAMP1 Rabbit Polyclonal Antibody



CAB11690

Product Information

Size:

20uL, 50uL, 100uL, 200uL

Observed MW:

130kDa

Calculated MW:

89kDa

Applications:

WB IHC IF

Reactivity:

Human, Mouse

Antibody Information

Recommended dilutions:

WB 1:500 - 1:2000 IHC 1:50
- 1:100 IF 1:50 - 1:100

Source:

Rabbit

Isotype:

IgG

Purification:

Affinity purification

Protein Background

Immunogen information

Gene ID:

283489

Uniprot

Q96JM3

Synonyms:

CHAMP1; C13orf8; CAMP; CHAMP; MRD40; ZNF828

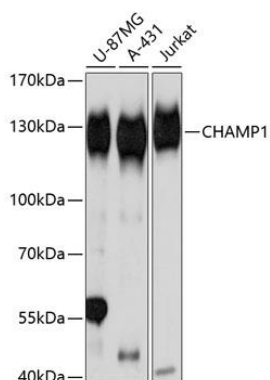
Immunogen:

Recombinant fusion protein containing a sequence corresponding to amino acids 563-812 of human CHAMP1 (NP_115812.1).

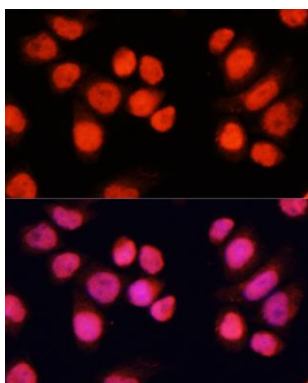
Storage:

Store at -20°C. Avoid freeze / thaw cycles. Buffer: PBS with 0.02% sodium azide, 50% glycerol, pH7.3.

Product Images



Western blot analysis of extracts of various cell lines, using CHAMP1 Antibody (CAB11690) at 1:3000 dilution. Secondary antibody: HRP Goat Anti-Rabbit IgG (H+L) (CABS014) at 1:10000 dilution. Lysates/proteins: 25ug per lane. Blocking buffer: 3% nonfat dry milk in TBST. Detection: ECL Basic Kit (CABM00020). Exposure time: 1s.



Immunofluorescence analysis of HeLa cells using CHAMP1 antibody (CAB11690) at dilution of 1:100 (40x lens). Blue: DAPI for nuclear staining.