

Aggrecan Rabbit Monoclonal Antibody



CAB11691

Product Information

Size:

20uL, 50uL, 100uL, 200uL

Observed MW:

261KDa

Calculated MW:

250kDa

Applications:

WB IHC

Reactivity:

Human, Mouse, Rat

Protein Background

This gene is a member of the aggrecan/versican proteoglycan family. The encoded protein is an integral part of the extracellular matrix in cartilagenous tissue and it withstands compression in cartilage. Mutations in this gene may be involved in skeletal dysplasia and spinal degeneration. Multiple alternatively spliced transcript variants that encode different protein isoforms have been observed in this gene. [provided by RefSeq, Jul 2008]

Immunogen information

Gene ID:

176

Uniprot

P16112

Synonyms:

AGC1; AGCAN; CSPG1; CSPGCP; MSK16; SEDK

Antibody Information

Recommended dilutions:

WB 1:500 - 1:2000 IHC 1:50
- 1:200

Source:

Rabbit

Isotype:

IgG

Purification:

Affinity purification

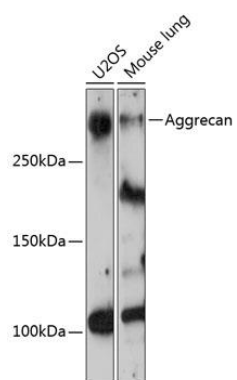
Immunogen:

A synthesized peptide derived from human Aggrecan

Storage:

Store at -20°C. Avoid freeze / thaw cycles. Buffer: PBS with 0.02% sodium azide, 0.05% BSA, 50% glycerol, pH7.3.

Product Images



Western blot - Aggrecan Rabbit mAb (CAB11691)