

# MAP4K4 Rabbit Polyclonal Antibody



CAB11706

---

## Product Information

### Size:

20uL, 50uL, 100uL, 200uL

### Observed MW:

142kDa

### Calculated MW:

133kDa/138kDa/141kDa/142kDa/145kDa/150kDa

### Applications:

WB IHC

### Reactivity:

Human

## Antibody Information

### Recommended dilutions:

WB 1:500 - 1:2000 IHC 1:50 - 1:100

### Source:

Rabbit

### Isotype:

IgG

### Purification:

Affinity purification

## Protein Background

The protein encoded by this gene is a member of the serine/threonine protein kinase family. This kinase has been shown to specifically activate MAPK8/JNK. The activation of MAPK8 by this kinase is found to be inhibited by the dominant-negative mutants of MAP3K7/TAK1, MAP2K4/MKK4, and MAP2K7/MKK7, which suggests that this kinase may function through the MAP3K7-MAP2K4-MAP2K7 kinase cascade, and mediate the TNF-alpha signaling pathway. Alternatively spliced transcript variants encoding different isoforms have been identified.

## Immunogen information

### Gene ID:

9448

### Uniprot

O95819

### Synonyms:

MAP4K4; FLH21957; HEL-S-31; HGK; MEKKK4; NIK

### Immunogen:

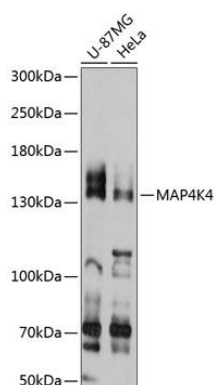
Recombinant fusion protein containing a sequence corresponding to amino acids 480-650 of human MAP4K4 (NP\_663719.2).

### Storage:

Store at -20°C. Avoid freeze / thaw cycles. Buffer: PBS with 0.02% sodium azide, 50% glycerol, pH7.3.

## Product Images

---



Western blot analysis of extracts of various cell lines, using MAP4K4 antibody (CAB11706) at 1:3000 dilution. Secondary antibody: HRP Goat Anti-Rabbit IgG (H+L) (CABS014) at 1:10000 dilution. Lysates/proteins: 25ug per lane. Blocking buffer: 3% nonfat dry milk in TBST. Detection: ECL Basic Kit (CABM00020). Exposure time: 10s.