

# ARRB2 Rabbit Polyclonal Antibody



CAB1171

## Product Information

### Size:

20uL, 50uL, 100uL, 200uL

### Observed MW:

52kDa

### Calculated MW:

44kDa/45kDa/46kDa/47kDa/  
48kDa

### Applications:

WB IHC IF

### Reactivity:

Human, Mouse, Rat

## Antibody Information

### Recommended dilutions:

WB 1:500 - 1:2000 IHC 1:50  
- 1:200 IF 1:50 - 1:200

### Source:

Rabbit

### Isotype:

IgG

### Purification:

Affinity purification

## Protein Background

Members of arrestin/beta-arrestin protein family are thought to participate in agonist-mediated desensitization of G-protein-coupled receptors and cause specific dampening of cellular responses to stimuli such as hormones, neurotransmitters, or sensory signals. Arrestin beta 2, like arrestin beta 1, was shown to inhibit beta-adrenergic receptor function in vitro. It is expressed at high levels in the central nervous system and may play a role in the regulation of synaptic receptors. Besides the brain, a cDNA for arrestin beta 2 was isolated from thyroid gland, and thus it may also be involved in hormone-specific desensitization of TSH receptors. Multiple alternatively spliced transcript variants encoding different isoforms have been found for this gene.

## Immunogen information

### Gene ID:

409

### Uniprot

P32121

### Synonyms:

ARRB2; ARB2; ARR2; BARR2

### Immunogen:

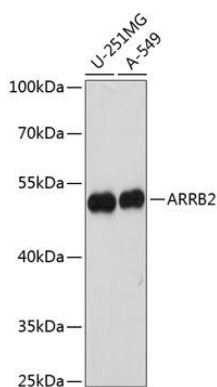
A synthetic peptide corresponding to a sequence within amino acids 300-400 of human ARRB2 (NP\_004304.1).

### Storage:

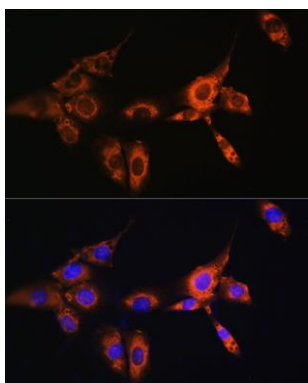
Store at -20°C. Avoid freeze / thaw cycles. Buffer: PBS with 0.02% sodium azide, 50% glycerol, pH7.3.

## Product Images

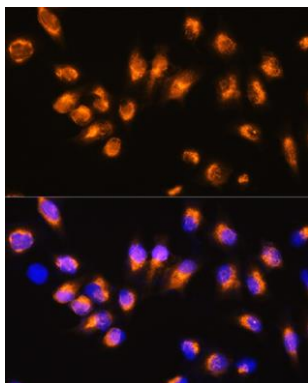
---



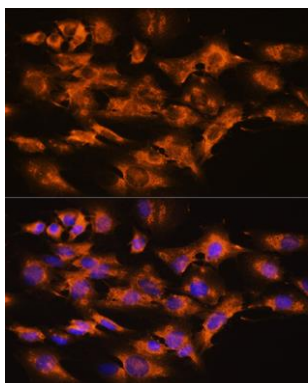
Western blot analysis of extracts of various cell lines, using ARR2 antibody (CAB1171) at 1:1000 dilution. Secondary antibody: HRP Goat Anti-Rabbit IgG (H+L) (CABS014) at 1:10000 dilution. Lysates/proteins: 25ug per lane. Blocking buffer: 3% nonfat dry milk in TBST. Detection: ECL Enhanced Kit (CABM00021). Exposure time: 90s.



Immunofluorescence analysis of NIH/3T3 cells using ARR2 Rabbit pAb (CAB1171) at dilution of 1:100. Blue: DAPI for nuclear staining.



Immunofluorescence analysis of HeLa cells using ARR2 Rabbit pAb (CAB1171) at dilution of 1:100. Blue: DAPI for nuclear staining.



Immunofluorescence analysis of C6 cells using ARR2 Rabbit pAb (CAB1171) at dilution of 1:100. Blue: DAPI for nuclear staining.