

P2RX5 Rabbit Polyclonal Antibody



CAB11710

Product Information

Size:

20uL, 50uL, 100uL, 200uL

Observed MW:

115kDa

Calculated MW:

44kDa/47kDa/48kDa

Applications:

WB IF

Reactivity:

Human, Mouse, Rat

Protein Background

The product of this gene belongs to the family of purinoceptors for ATP. This receptor functions as a ligand-gated ion channel. Alternative splicing results in multiple transcript variants. Read-through transcription also exists between this gene and the neighboring downstream gene, TAX1BP3 (Tax1 binding protein 3).

Immunogen information

Gene ID:

5026

Uniprot

Q93086

Synonyms:

P2RX5; LRH-1; P2X5; P2X5R

Antibody Information

Recommended dilutions:

WB 1:500 - 1:2000 IF 1:50 - 1:200

Source:

Rabbit

Isotype:

IgG

Purification:

Affinity purification

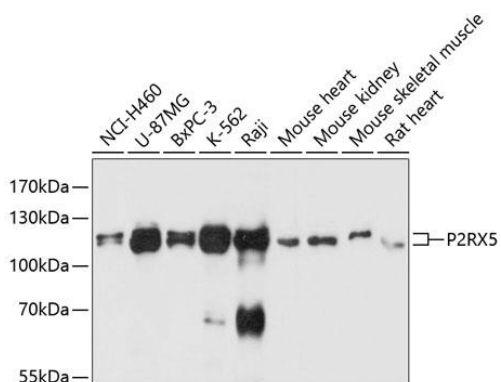
Immunogen:

Recombinant fusion protein containing a sequence corresponding to amino acids 341-422 of human P2RX5 (NP_002552.2).

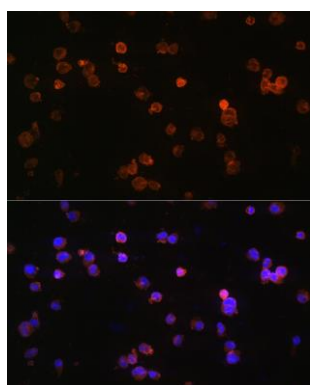
Storage:

Store at -20°C. Avoid freeze / thaw cycles. Buffer: PBS with 0.02% sodium azide, 50% glycerol, pH7.3.

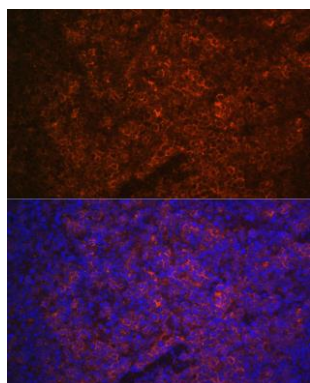
Product Images



Western blot analysis of extracts of various cell lines, using P2RX5 antibody (CAB11710) at 1:3000 dilution. Secondary antibody: HRP Goat Anti-Rabbit IgG (H+L) (CABS014) at 1:10000 dilution. Lysates/proteins: 25ug per lane. Blocking buffer: 3% nonfat dry milk in TBST. Detection: ECL Basic Kit (CABM00020). Exposure time: 10s.



Immunofluorescence analysis of Jurkat cells using P2RX5 Rabbit pAb (CAB11710) at dilution of 1:100 (40x lens). Blue: DAPI for nuclear staining.



Immunofluorescence analysis of mouse spleen using P2RX5 Rabbit pAb (CAB11710) at dilution of 1:100 (40x lens). Blue: DAPI for nuclear staining.