

CAPN1 Rabbit Polyclonal Antibody



CAB1172

Product Information

Size:

20uL, 50uL, 100uL, 200uL

Observed MW:

82kDa

Calculated MW:

81kDa

Applications:

WB IHC

Reactivity:

Human, Mouse

Protein Background

The calpains, calcium-activated neutral proteases, are nonlysosomal, intracellular cysteine proteases. The mammalian calpains include ubiquitous, stomach-specific, and muscle-specific proteins. The ubiquitous enzymes consist of heterodimers with distinct large, catalytic subunits associated with a common small, regulatory subunit. This gene encodes the large subunit of the ubiquitous enzyme, calpain 1. Several transcript variants encoding two different isoforms have been found for this gene.

Immunogen information

Gene ID:

823

Uniprot

P07384

Synonyms:

CAPN1; CANP; CANP1; CANPL1; SPG76; muCANP; muCL; calpain 1

Antibody Information

Recommended dilutions:

WB 1:500 - 1:2000 IHC 1:50 - 1:200

Source:

Rabbit

Isotype:

IgG

Purification:

Affinity purification

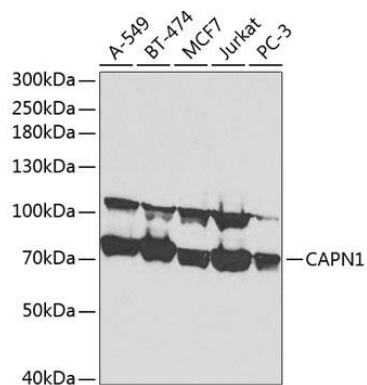
Immunogen:

Recombinant fusion protein containing a sequence corresponding to amino acids 20-330 of human CAPN1 (NP_005177.2).

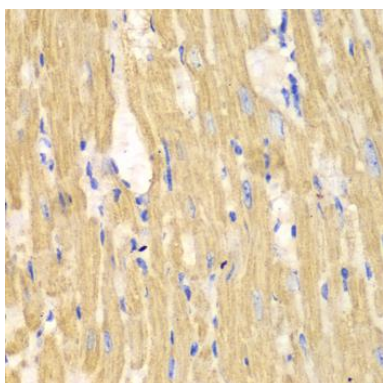
Storage:

Store at -20°C. Avoid freeze / thaw cycles. Buffer: PBS with 0.02% sodium azide, 50% glycerol, pH7.3.

Product Images



Western blot analysis of extracts of various cell lines, using CAPN1 antibody (CAB1172) at 1:1000 dilution. Secondary antibody: HRP Goat Anti-Rabbit IgG (H+L) (CABS014) at 1:10000 dilution. Lysates/proteins: 25ug per lane. Blocking buffer: 3% nonfat dry milk in TBST.



Immunohistochemistry of paraffin-embedded mouse heart using CAPN1 antibody (CAB1172) at dilution of 1:100 (40x lens).