

TRIM15 Rabbit Polyclonal Antibody



CAB11730

Product Information

Size:

20uL, 50uL, 100uL, 200uL

Observed MW:

52kDa

Calculated MW:

12kDa/52kDa

Applications:

WB IHC

Reactivity:

Human, Rat

Protein Background

The protein encoded by this gene is a member of the tripartite motif (TRIM) family. The TRIM motif includes three zinc-binding domains, a RING, a B-box type 1 and a B-box type 2, and a coiled-coil region. The protein localizes to the cytoplasm. Alternatively spliced transcript variants have been described, but their biological validity has not been determined.

Immunogen information

Gene ID:

89870

Uniprot

Q9C019

Synonyms:

TRIM15; RNF93; ZNF178; ZNFB7

Antibody Information

Recommended dilutions:

WB 1:500 - 1:2000 IHC 1:50
- 1:200

Source:

Rabbit

Isotype:

IgG

Purification:

Affinity purification

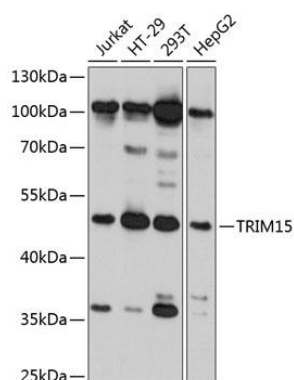
Immunogen:

Recombinant fusion protein containing a sequence corresponding to amino acids 1-330 of human TRIM15 (NP_150232.2).

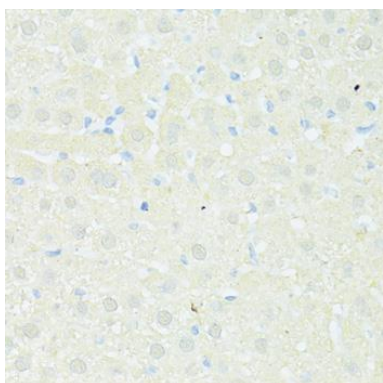
Storage:

Store at -20°C. Avoid freeze / thaw cycles. Buffer: PBS with 0.02% sodium azide, 50% glycerol, pH7.3.

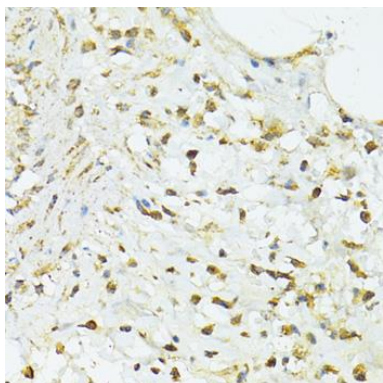
Product Images



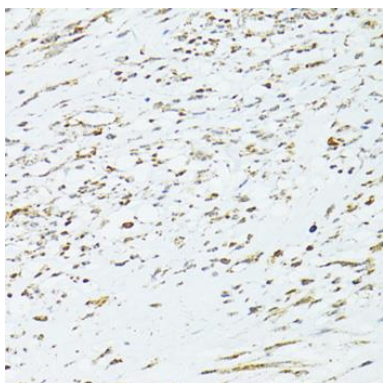
Western blot analysis of extracts of various cell lines, using TRIM15 antibody (CAB11730) at 1:3000 dilution. Secondary antibody: HRP Goat Anti-Rabbit IgG (H+L) (CABS014) at 1:10000 dilution. Lysates/proteins: 25ug per lane. Blocking buffer: 3% nonfat dry milk in TBST. Detection: ECL Basic Kit (CABM00020). Exposure time: 10s.



Immunohistochemistry of paraffin-embedded rat liver using TRIM15 antibody (CAB11730) at dilution of 1:100 (40x lens).



Immunohistochemistry of paraffin-embedded human vermiform appendix using TRIM15 antibody (CAB11730) at dilution of 1:100 (40x lens).



Immunohistochemistry of paraffin-embedded human uterine cancer using TRIM15 antibody (CAB11730) at dilution of 1:100 (40x lens).