

# SERPINI2 Rabbit Polyclonal Antibody



CAB11732

---

## Product Information

### Size:

20uL, 50uL, 100uL, 200uL

### Observed MW:

46kDa

### Calculated MW:

46kDa

### Applications:

WB IHC IF

### Reactivity:

Mouse, Rat

## Protein Background

The gene encodes a member of a family of proteins that acts as inhibitors of serine proteases. These proteins function in the regulation of a variety of physiological processes, including coagulation, fibrinolysis, development, malignancy, and inflammation. Expression of the encoded protein may be downregulated during pancreatic carcinogenesis. Alternative splicing results in multiple transcript variants for this gene.

## Immunogen information

### Gene ID:

5276

### Uniprot

O75830

### Synonyms:

SERPINI2; MEPI; PANCPIN; PI14; TSA2004; serpin I2

## Antibody Information

### Recommended dilutions:

WB 1:500 - 1:2000 IHC 1:50  
- 1:100 IF 1:50 - 1:100

### Source:

Rabbit

### Isotype:

IgG

### Purification:

Affinity purification

### Immunogen:

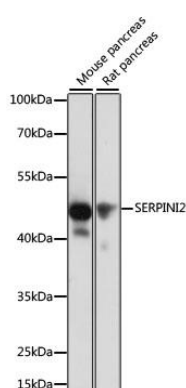
Recombinant fusion protein containing a sequence corresponding to amino acids 56-405 of human SERPINI2 (NP\_006208.1).

### Storage:

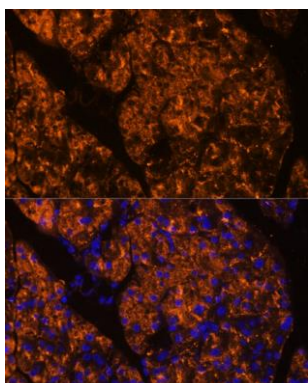
Store at -20°C. Avoid freeze / thaw cycles. Buffer: PBS with 0.02% sodium azide, 50% glycerol, pH7.3.

## Product Images

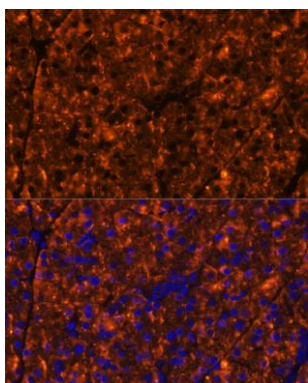
---



Western blot analysis of extracts of various cell lines, using SERPINI2 antibody (CAB11732) at 1:1000 dilution. Secondary antibody: HRP Goat Anti-Rabbit IgG (H+L) (CABS014) at 1:10000 dilution. Lysates/proteins: 25ug per lane. Blocking buffer: 3% nonfat dry milk in TBST. Detection: ECL Basic Kit (CABM00020). Exposure time: 10s.



Immunofluorescence analysis of rat pancreas using SERPINI2 Polyclonal Antibody (CAB11732) at dilution of 1:100 (40x lens). Blue: DAPI for nuclear staining.



Immunofluorescence analysis of mouse pancreas using SERPINI2 Polyclonal Antibody (CAB11732) at dilution of 1:100 (40x lens). Blue: DAPI for nuclear staining.