

RALA Rabbit Polyclonal Antibody



CAB11736

Product Information

Size:

20uL, 50uL, 100uL, 200uL

Observed MW:

24kDa

Calculated MW:

23kDa

Applications:

WB IF

Reactivity:

Human, Mouse, Rat

Protein Background

The product of this gene belongs to the small GTPase superfamily, Ras family of proteins. GTP-binding proteins mediate the transmembrane signaling initiated by the occupancy of certain cell surface receptors. This gene encodes a low molecular mass ras-like GTP-binding protein that shares about 50% similarity with other ras proteins.

Immunogen information

Gene ID:

5898

Uniprot

P11233

Synonyms:

RALA; RAL

Antibody Information

Recommended dilutions:

WB 1:500 - 1:2000 IF 1:50 - 1:200

Source:

Rabbit

Isotype:

IgG

Purification:

Affinity purification

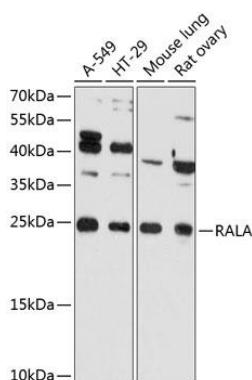
Immunogen:

Recombinant fusion protein containing a sequence corresponding to amino acids 1-206 of human RALA (NP_005393.2).

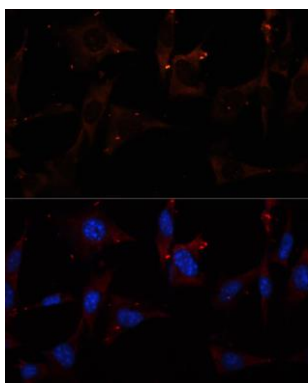
Storage:

Store at -20°C. Avoid freeze / thaw cycles. Buffer: PBS with 0.02% sodium azide, 50% glycerol, pH7.3.

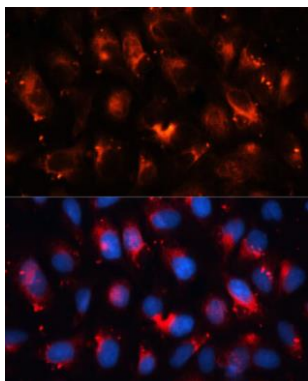
Product Images



Western blot analysis of extracts of various cell lines, using RALA Antibody (CAB11736) at 1:3000 dilution. Secondary antibody: HRP Goat Anti-Rabbit IgG (H+L) (CABS014) at 1:10000 dilution. Lysates/proteins: 25ug per lane. Blocking buffer: 3% nonfat dry milk in TBST. Detection: ECL Basic Kit (CABM00020). Exposure time: 60s.



Immunofluorescence analysis of NIH/3T3 cells using RALA antibody (CAB11736) at dilution of 1:100. Blue: DAPI for nuclear staining.



Immunofluorescence analysis of U-2OS cells using RALA antibody (CAB11736) at dilution of 1:100. Blue: DAPI for nuclear staining.