

FEN1 Rabbit Polyclonal Antibody



CAB1175

Product Information

Size:

20uL, 50uL, 100uL, 200uL

Observed MW:

48kDa

Calculated MW:

35kDa/42kDa

Applications:

WB IHC IF IP

Reactivity:

Human, Mouse

Antibody Information

Recommended dilutions:

WB 1:500 - 1:2000 IHC 1:50
- 1:200 IF 1:10 - 1:100 IP
1:50 - 1:200

Source:

Rabbit

Isotype:

IgG

Purification:

Affinity purification

Protein Background

The protein encoded by this gene removes 5' overhanging flaps in DNA repair and processes the 5' ends of Okazaki fragments in lagging strand DNA synthesis. Direct physical interaction between this protein and AP endonuclease 1 during long-patch base excision repair provides coordinated loading of the proteins onto the substrate, thus passing the substrate from one enzyme to another. The protein is a member of the XPG/RAD2 endonuclease family and is one of ten proteins essential for cell-free DNA replication. DNA secondary structure can inhibit flap processing at certain trinucleotide repeats in a length-dependent manner by concealing the 5' end of the flap that is necessary for both binding and cleavage by the protein encoded by this gene. Therefore, secondary structure can deter the protective function of this protein, leading to site-specific trinucleotide expansions.

Immunogen information

Gene ID:

2237

Uniprot

P39748

Synonyms:

FEN1; FEN-1; MF1; RAD2

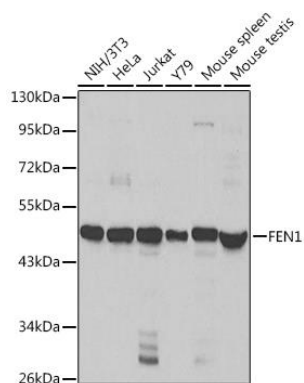
Immunogen:

Recombinant fusion protein containing a sequence corresponding to amino acids 50-380 of human FEN1 (NP_004102.1).

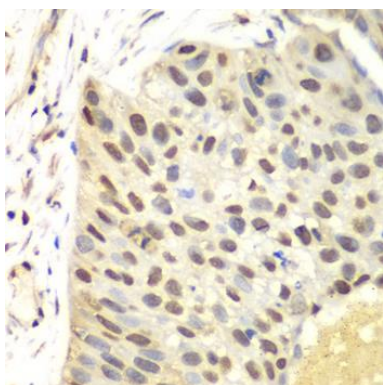
Storage:

Store at -20°C. Avoid freeze / thaw cycles. Buffer: PBS with 0.02% sodium azide, 50% glycerol, pH7.3.

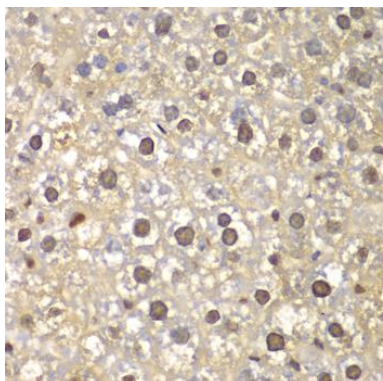
Product Images



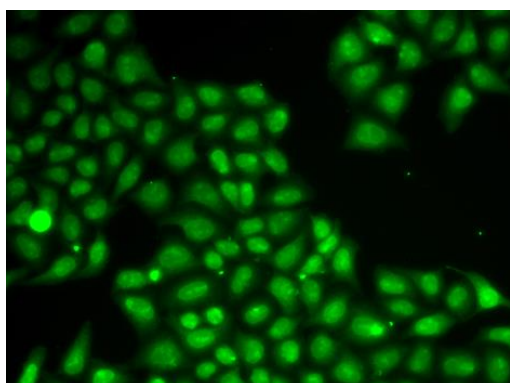
Western blot analysis of extracts of various cell lines, using FEN1 antibody (CAB1175) at 1:1000 dilution. Secondary antibody: HRP Goat Anti-Rabbit IgG (H+L) (CABS014) at 1:10000 dilution. Lysates/proteins: 25ug per lane. Blocking buffer: 3% nonfat dry milk in TBST.



Immunohistochemistry of paraffin-embedded human lung cancer using FEN1 antibody (CAB1175) at dilution of 1:100 (40x lens).



Immunohistochemistry of paraffin-embedded mouse liver using FEN1 antibody (CAB1175) at dilution of 1:100 (40x lens).



Immunofluorescence analysis of A549 cells using FEN1 antibody (CAB1175).