

GJA1 Rabbit Polyclonal Antibody



CAB11752

Product Information

Size:

20uL, 50uL, 100uL, 200uL

Observed MW:

43kDa

Calculated MW:

43kDa

Applications:

WB IHC IF

Reactivity:

Human, Mouse, Rat

Antibody Information

Recommended dilutions:

WB 1:500 - 1:2000 IHC 1:50
- 1:200 IF 1:50 - 1:200

Source:

Rabbit

Isotype:

IgG

Purification:

Affinity purification

Protein Background

This gene is a member of the connexin gene family. The encoded protein is a component of gap junctions, which are composed of arrays of intercellular channels that provide a route for the diffusion of low molecular weight materials from cell to cell. The encoded protein is the major protein of gap junctions in the heart that are thought to have a crucial role in the synchronized contraction of the heart and in embryonic development. A related intronless pseudogene has been mapped to chromosome 5. Mutations in this gene have been associated with oculodentodigital dysplasia, autosomal recessive craniometaphyseal dysplasia and heart malformations.

Immunogen information

Gene ID:

2697

Uniprot

P17302

Synonyms:

GJA1; AVSD3; CMDR; CX43; EKVP; GJAL; HLHS1; HSS; ODDD;
PPKCA; EKVP3

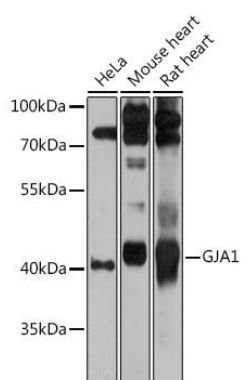
Immunogen:

Recombinant fusion protein containing a sequence corresponding to amino acids 233-382 of human GJA1 (NP_000156.1).

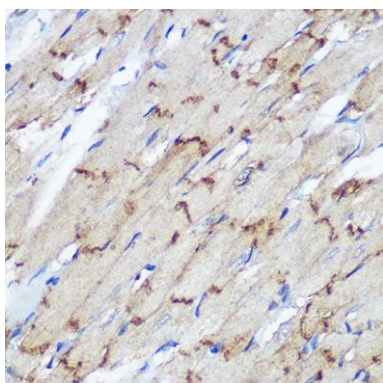
Storage:

Store at -20°C. Avoid freeze / thaw cycles. Buffer: PBS with 0.02% sodium azide, 50% glycerol, pH7.3.

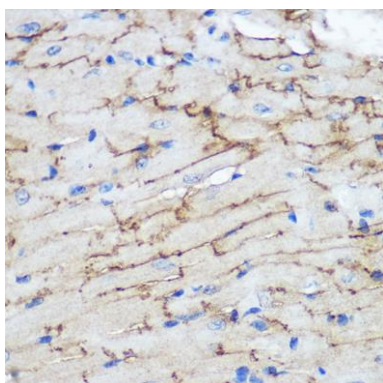
Product Images



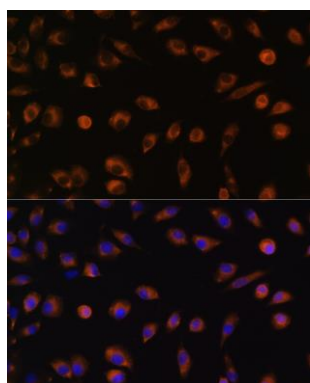
Western blot analysis of extracts of various cell lines, using GJA1 antibody (CAB11752) at 1:1000 dilution. Secondary antibody: HRP Goat Anti-Rabbit IgG (H+L) (CABS014) at 1:10000 dilution. Lysates/proteins: 25ug per lane. Blocking buffer: 3% nonfat dry milk in TBST. Detection: ECL Basic Kit (CABM00020). Exposure time: 30s.



Immunohistochemistry of paraffin-embedded Rat heart using GJA1 Rabbit pAb (CAB11752) at dilution of 1:100 (40x lens).



Immunohistochemistry of paraffin-embedded Mouse heart using GJA1 Rabbit pAb (CAB11752) at dilution of 1:100 (40x lens).



Immunofluorescence analysis of L929 cells using GJA1 Rabbit pAb (CAB11752) at dilution of 1:100 (40x lens). Blue: DAPI for nuclear staining.