

[KO Validated] Beclin 1 Rabbit Polyclonal Antibody

CAB11761



Product Information

Size:

20uL, 50uL, 100uL, 200uL

Observed MW:

52KDa

Calculated MW:

51kDa

Applications:

WB

Reactivity:

Human, Mouse

Protein Background

This gene encodes a protein that regulates autophagy, a catabolic process of degradation induced by starvation. The encoded protein is a component of the phosphatidylinositol-3-kinase (PI3K) complex which mediates vesicle-trafficking processes. This protein is thought to play a role in multiple cellular processes, including tumorigenesis, neurodegeneration and apoptosis. Alternative splicing results in multiple transcript variants.

Immunogen information

Gene ID:

8678

Uniprot

Q14457

Synonyms:

ATG6; VPS30; beclin1; Beclin 1; BECN1; beclin-1

Antibody Information

Recommended dilutions:

WB 1:500 - 1:2000

Source:

Rabbit

Isotype:

IgG

Purification:

Affinity purification

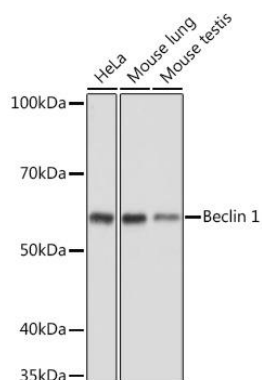
Immunogen:

Recombinant fusion protein containing a sequence corresponding to amino acids 1-280 of human Beclin 1 (NP_003757.1).

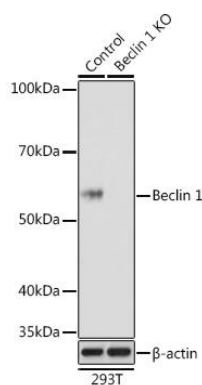
Storage:

Store at -20°C. Avoid freeze / thaw cycles. Buffer: PBS with 0.02% sodium azide, 50% glycerol, pH7.3.

Product Images



Western blot analysis of extracts of various cell lines, using Beclin 1 Rabbit pAb (CAB11761) at 1:1000 dilution. Secondary antibody: HRP Goat Anti-Rabbit IgG (H+L) (CABS014) at 1:10000 dilution. Lysates/proteins: 25ug per lane. Blocking buffer: 3% nonfat dry milk in TBST. Detection: ECL Basic Kit (CABM00020). Exposure time: 30s.



Western blot analysis of extracts from normal (control) and Beclin 1 Rabbit pAb knockout (KO) 293T cells, using Beclin 1 Rabbit pAb antibody (CAB11761) at 1:1000 dilution. Secondary antibody: HRP Goat Anti-Rabbit IgG (H+L) (CABS014) at 1:10000 dilution. Lysates/proteins: 25ug per lane. Blocking buffer: 3% nonfat dry milk in TBST. Detection: ECL Basic Kit (CABM00020). Exposure time: 30s.