

# TGFR2 Rabbit Polyclonal Antibody



CAB11788

## Product Information

### Size:

20uL, 50uL, 100uL, 200uL

### Observed MW:

90kDa

### Calculated MW:

64kDa/67kDa

### Applications:

WB IHC IF

### Reactivity:

Human, Mouse, Rat

## Antibody Information

### Recommended dilutions:

WB 1:500 - 1:2000 IHC 1:50  
- 1:200 IF 1:50 - 1:200

### Source:

Rabbit

### Isotype:

IgG

### Purification:

Affinity purification

## Protein Background

This gene encodes a member of the Ser/Thr protein kinase family and the TGF $\beta$  receptor subfamily. The encoded protein is a transmembrane protein that has a protein kinase domain, forms a heterodimeric complex with another receptor protein, and binds TGF $\beta$ . This receptor/ligand complex phosphorylates proteins, which then enter the nucleus and regulate the transcription of a subset of genes related to cell proliferation. Mutations in this gene have been associated with Marfan Syndrome, Loeys-Deitz Aortic Aneurysm Syndrome, and the development of various types of tumors. Alternatively spliced transcript variants encoding different isoforms have been characterized.

## Immunogen information

### Gene ID:

7048

### Uniprot

P37173

### Synonyms:

AAT3; FAA3; LDS1B; LDS2; LDS2B; MFS2; RIIC; TAAD2; TGFR-2;  
TGF $\beta$ -RII; TGF  $\beta$  Receptor II; TGFR2

### Immunogen:

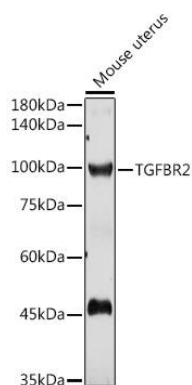
Recombinant fusion protein containing a sequence corresponding to amino acids 23-280 of human TGFR2 (NP\_003233.4).

### Storage:

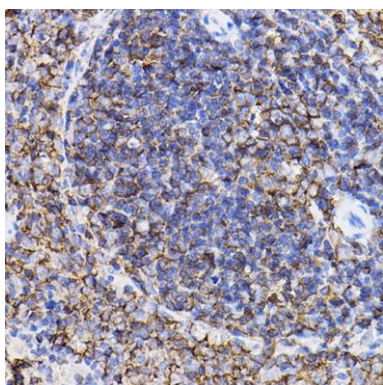
Store at -20°C. Avoid freeze / thaw cycles. Buffer: PBS with 0.02% sodium azide, 50% glycerol, pH7.3.

## Product Images

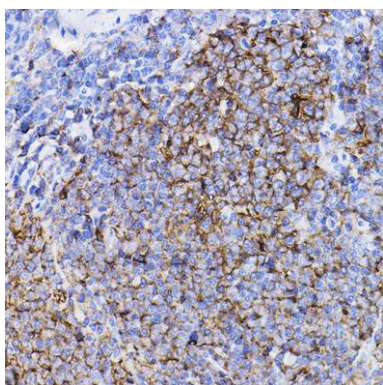
---



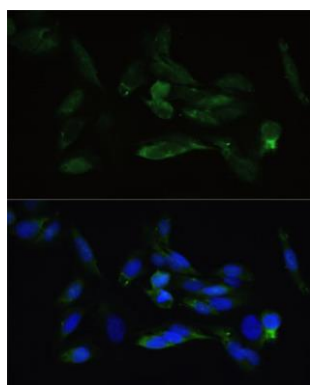
Western blot analysis of extracts of Mouse uterus, using TGFBR2 antibody (CAB11788) at 1:1000 dilution. Secondary antibody: HRP Goat Anti-Rabbit IgG (H+L) (CABS014) at 1:10000 dilution. Lysates/proteins: 25ug per lane. Blocking buffer: 3% nonfat dry milk in TBST. Detection: ECL Basic Kit (CABM00020). Exposure time: 90s.



Immunohistochemistry of paraffin-embedded rat spleen using TGFBR2 Rabbit pAb (CAB11788) at dilution of 1:100 (40x lens).



Immunohistochemistry of paraffin-embedded mouse spleen using TGFBR2 Rabbit pAb (CAB11788) at dilution of 1:100 (40x lens).



Immunofluorescence analysis of U2OS cells using TGFBR2 antibody (CAB11788) at dilution of 1:100. Blue: DAPI for nuclear staining.