

ASMT Rabbit Polyclonal Antibody



CAB11840

Product Information

Size:

50uL, 100uL, 200uL

Observed MW:

52kDa

Calculated MW:

33kDa/38kDa/41kDa

Applications:

WB IHC

Reactivity:

Human

Protein Background

This gene belongs to the methyltransferase superfamily, and is located in the pseudoautosomal region (PAR) at the end of the short arms of the X and Y chromosomes. The encoded enzyme catalyzes the final reaction in the synthesis of melatonin, and is abundant in the pineal gland. Alternatively spliced transcript variants have been noted for this gene.

Immunogen information

Gene ID:

438

Uniprot

P46597

Synonyms:

ASMT; ASMTY; HIOMT; HIOMTY

Antibody Information

Recommended dilutions:

WB 1:500 - 1:2000 IHC 1:50
- 1:100

Source:

Rabbit

Isotype:

IgG

Purification:

Affinity purification

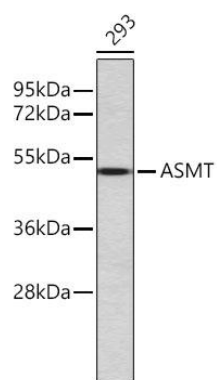
Immunogen:

A synthetic peptide of human ASMT

Storage:

Store at -20°C. Avoid freeze / thaw cycles. Buffer: PBS with 0.02% sodium azide, 50% glycerol, pH7.3.

Product Images



Western blot analysis of extracts of 293 cells, using ASMT antibody (CAB11840). Secondary antibody: HRP Goat Anti-Rabbit IgG (H+L) (CABS014) at 1:10000 dilution. Lysates/proteins: 25ug per lane. Blocking buffer: 3% nonfat dry milk in TBST.