

CALM1 Rabbit Polyclonal Antibody



CAB1185

Product Information

Size:

20uL, 50uL, 100uL, 200uL

Observed MW:

13-17kDa

Calculated MW:

16kDa

Applications:

WB

Reactivity:

Human, Mouse

Protein Background

This gene encodes a member of the EF-hand calcium-binding protein family. It is one of three genes which encode an identical calcium binding protein which is one of the four subunits of phosphorylase kinase. Two pseudogenes have been identified on chromosome 7 and X. Multiple transcript variants encoding different isoforms have been found for this gene.

Immunogen information

Gene ID:

801

Uniprot

P62158

Synonyms:

CALM1; CALML2; CAMI; CPVT4; DD132; LQT14; PHKD; caM

Antibody Information

Recommended dilutions:

WB 1:500 - 1:2000

Source:

Rabbit

Isotype:

IgG

Purification:

Affinity purification

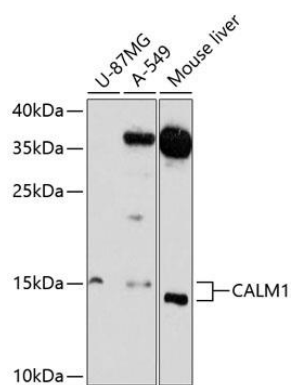
Immunogen:

Recombinant fusion protein containing a sequence corresponding to amino acids 1-149 of human CALM1 (NP_001734.1).

Storage:

Store at -20°C. Avoid freeze / thaw cycles. Buffer: PBS with 0.02% sodium azide, 50% glycerol, pH7.3.

Product Images



Western blot analysis of extracts of various cell lines, using CALM1 antibody (CAB1185) at 1:3000 dilution. Secondary antibody: HRP Goat Anti-Rabbit IgG (H+L) (CABS014) at 1:10000 dilution. Lysates/proteins: 25ug per lane. Blocking buffer: 3% nonfat dry milk in TBST. Detection: ECL Enhanced Kit (CABM00021). Exposure time: 90s.