

# AANAT Rabbit Polyclonal Antibody



CAB11850

## Product Information

**Size:**

100uL, 200uL

**Observed MW:**

35kDa

**Calculated MW:**

23kDa/28kDa

**Applications:**

WB

**Reactivity:**

Human

## Antibody Information

**Recommended dilutions:**

WB 1:500 - 1:1000

**Source:**

Rabbit

**Isotype:**

IgG

**Purification:**

Affinity purification

## Protein Background

The protein encoded by this gene belongs to the acetyltransferase superfamily. It is the penultimate enzyme in melatonin synthesis and controls the night/day rhythm in melatonin production in the vertebrate pineal gland. Melatonin is essential for the function of the circadian clock that influences activity and sleep. This enzyme is regulated by cAMP-dependent phosphorylation that promotes its interaction with 14-3-3 proteins and thus protects the enzyme against proteasomal degradation. This gene may contribute to numerous genetic diseases such as delayed sleep phase syndrome. Alternatively spliced transcript variants encoding different isoforms have been found for this gene.

## Immunogen information

**Gene ID:**

15

**Uniprot**

Q16613

**Synonyms:**

AANAT; DSPS; SNAT

**Immunogen:**

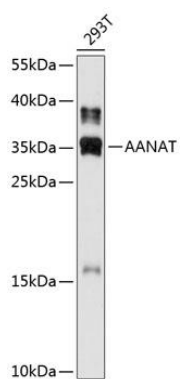
A synthetic peptide of human AANAT

**Storage:**

Store at -20°C. Avoid freeze / thaw cycles. Buffer: PBS with 0.02% sodium azide, 50% glycerol, pH7.3.

## Product Images

---



Western blot analysis of extracts of 293T cells, using AANAT antibody (CAB11850) at 1:1000 dilution. Secondary antibody: HRP Goat Anti-Rabbit IgG (H+L) (CABS014) at 1:10000 dilution. Lysates/proteins: 25ug per lane. Blocking buffer: 3% nonfat dry milk in TBST. Detection: ECL Enhanced Kit (CABM00021). Exposure time: 90s.