

# GGA2 Rabbit Polyclonal Antibody



CAB1186

## Product Information

### Size:

20uL, 50uL, 100uL, 200uL

### Observed MW:

72-80kDa

### Calculated MW:

67kDa

### Applications:

WB IHC IF

### Reactivity:

Human, Mouse

## Antibody Information

### Recommended dilutions:

WB 1:500 - 1:2000 IHC 1:50  
- 1:200 IF 1:50 - 1:200

### Source:

Rabbit

### Isotype:

IgG

### Purification:

Affinity purification

## Protein Background

This gene encodes a member of the Golgi-localized, gamma adaptin ear-containing, ARF-binding (GGA) family. This family includes ubiquitous coat proteins that regulate the trafficking of proteins between the trans-Golgi network and the lysosome. These proteins share an amino-terminal VHS domain which mediates sorting of the mannose 6-phosphate receptors at the trans-Golgi network. They also contain a carboxy-terminal region with homology to the ear domain of gamma-adaptins. This family member may play a significant role in cargo molecules regulation and clathrin-coated vesicle assembly.

## Immunogen information

### Gene ID:

23062

### Uniprot

Q9UJY4

### Synonyms:

GGA2; VEAR

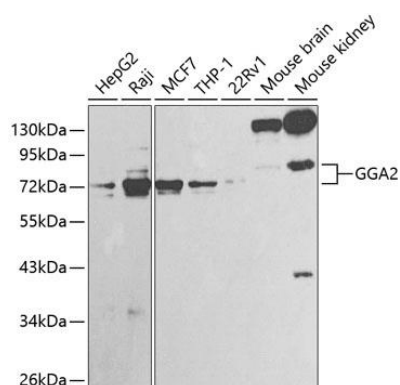
### Immunogen:

Recombinant fusion protein containing a sequence corresponding to amino acids 1-300 of human GGA2 (NP\_055859.1).

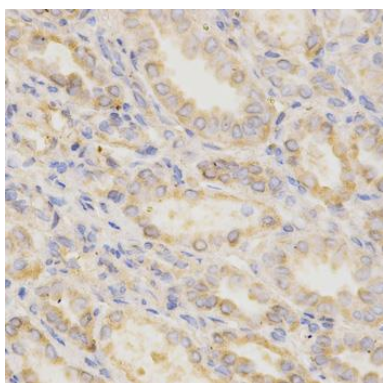
### Storage:

Store at -20°C. Avoid freeze / thaw cycles. Buffer: PBS with 0.02% sodium azide, 50% glycerol, pH7.3.

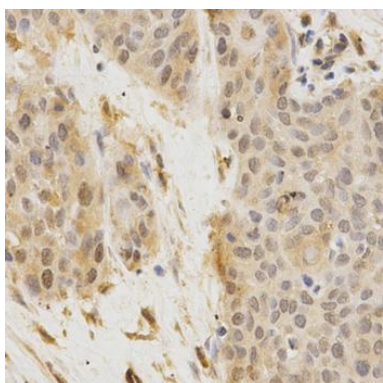
## Product Images



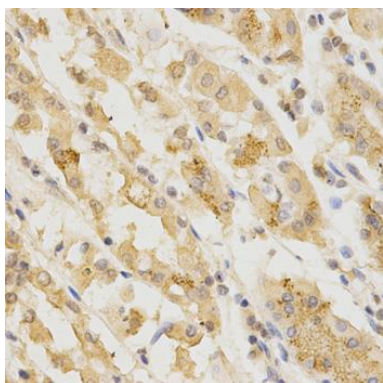
Western blot analysis of extracts of various cell lines, using GGA2 antibody (CAB1186) at 1:1000 dilution. Secondary antibody: HRP Goat Anti-Rabbit IgG (H+L) (CABS014) at 1:10000 dilution. Lysates/proteins: 25ug per lane. Blocking buffer: 3% nonfat dry milk in TBST.



Immunohistochemistry of paraffin-embedded human kidney using GGA2 Antibody (CAB1186) at dilution of 1:200 (40x lens).



Immunohistochemistry of paraffin-embedded human esophageal cancer using GGA2 Antibody (CAB1186) at dilution of 1:200 (40x lens).



Immunohistochemistry of paraffin-embedded human stomach using GGA2 Antibody (CAB1186) at dilution of 1:200 (40x lens).