

# AFP Mouse Monoclonal Antibody



CAB11865

## Product Information

### Size:

20uL, 50uL

### Observed MW:

69kDa

### Calculated MW:

68kDa

### Applications:

WB IHC IF

### Reactivity:

Human, Mouse, Rat

## Antibody Information

### Recommended dilutions:

WB 1:500 - 1:2000 IHC 1:50  
- 1:200 IF 1:50 - 1:200

### Source:

Mouse

### Isotype:

IgG

### Purification:

Affinity purification

## Protein Background

This gene encodes alpha-fetoprotein, a major plasma protein produced by the yolk sac and the liver during fetal life. Alpha-fetoprotein expression in adults is often associated with hepatoma or teratoma. However, hereditary persistence of alpha-fetoprotein may also be found in individuals with no obvious pathology. The protein is thought to be the fetal counterpart of serum albumin, and the alpha-fetoprotein and albumin genes are present in tandem in the same transcriptional orientation on chromosome 4. Alpha-fetoprotein is found in monomeric as well as dimeric and trimeric forms, and binds copper, nickel, fatty acids and bilirubin. The level of alpha-fetoprotein in amniotic fluid is used to measure renal loss of protein to screen for spina bifida and anencephaly.

## Immunogen information

### Gene ID:

174

### Uniprot

P02771

### Synonyms:

AFPD; FETA; HPAFP; AFP

### Immunogen:

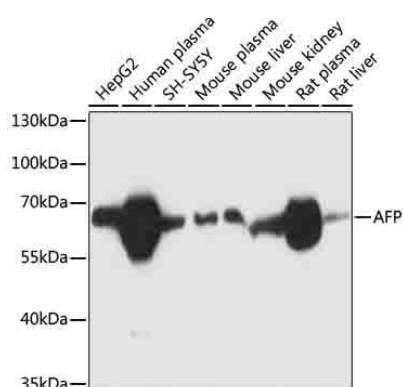
Recombinant protein of human AFP

### Storage:

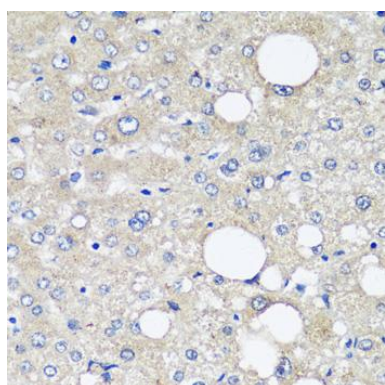
Store at -20°C. Avoid freeze / thaw cycles. Buffer: PBS with 0.02% sodium azide, 50% glycerol, pH7.3.

## Product Images

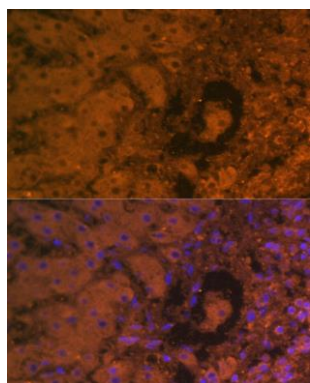
---



Western blot analysis of extracts of various cells, using AFP antibody (CAB11865) at 1:1000 dilution. Secondary antibody: HRP Goat Anti-Mouse IgG (H+L) (CABS003) at 1:10000 dilution. Lysates/proteins: 25ug per lane. Blocking buffer: 3% nonfat dry milk in TBST. Detection: ECL Basic Kit (CABM00020). Exposure time: 5s.



Immunohistochemistry of paraffin-embedded human liver cancer using AFP antibody (CAB11865) at dilution of 1:12.5 (40x lens).



Immunofluorescence analysis of human liver cancer using AFP antibody (CAB11865) at dilution of 1:100. Blue: DAPI for nuclear staining.