

# CDC42 Rabbit Polyclonal Antibody



CAB1188

---

## Product Information

### Size:

20uL, 50uL, 100uL, 200uL

### Observed MW:

21KDa

### Calculated MW:

21kDa

### Applications:

WB IHC IF

### Reactivity:

Human, Mouse, Rat

## Protein Background

The protein encoded by this gene is a small GTPase of the Rho-subfamily, which regulates signaling pathways that control diverse cellular functions including cell morphology, migration, endocytosis and cell cycle progression. This protein is highly similar to *Saccharomyces cerevisiae* Cdc 42, and is able to complement the yeast *cdc42-1* mutant. The product of oncogene Dbl was reported to specifically catalyze the dissociation of GDP from this protein. This protein could regulate actin polymerization through its direct binding to Neural Wiskott-Aldrich syndrome protein (N-WASP), which subsequently activates Arp2/3 complex. Alternative splicing of this gene results in multiple transcript variants. Pseudogenes of this gene have been identified on chromosomes 3, 4, 5, 7, 8 and 20.

## Immunogen information

### Gene ID:

998

### Uniprot

P60953

## Antibody Information

### Recommended dilutions:

WB 1:500 - 1:2000 IHC 1:50  
- 1:200 IF 1:50 - 1:200

### Source:

Rabbit

### Isotype:

IgG

### Purification:

Affinity purification

### Synonyms:

CDC42; CDC42Hs; G25K; TKS

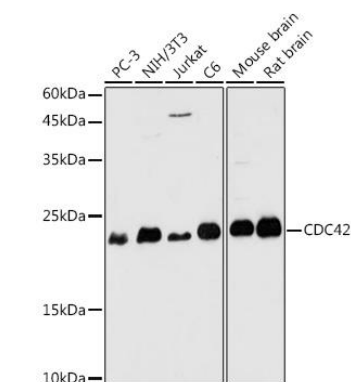
### Immunogen:

Recombinant fusion protein containing a sequence corresponding to amino acids 25-191 of human CDC42 (NP\_001782.1).

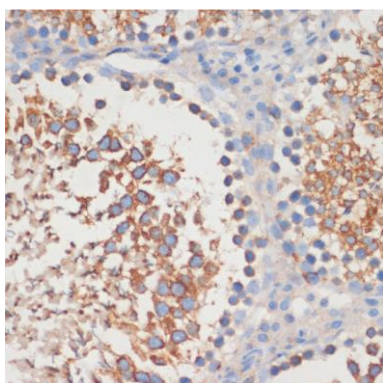
### Storage:

Store at -20°C. Avoid freeze / thaw cycles. Buffer: PBS with 0.02% sodium azide, 50% glycerol, pH7.3.

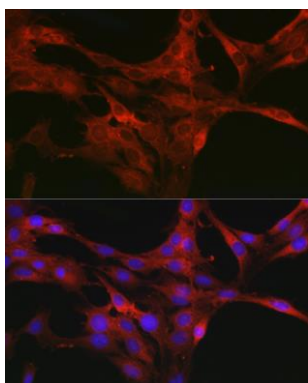
## Product Images



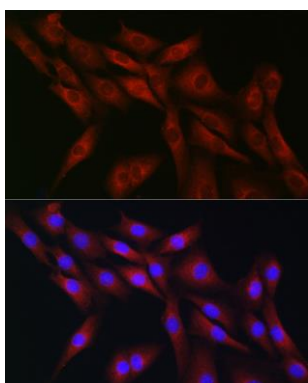
Western blot analysis of extracts of various cell lines, using CDC42 antibody (CAB1188) at 1:1000 dilution. Secondary antibody: HRP Goat Anti-Rabbit IgG (H+L) (CABS014) at 1:10000 dilution. Lysates/proteins: 25ug per lane. Blocking buffer: 3% nonfat dry milk in TBST. Detection: ECL Basic Kit (CABM00020). Exposure time: 180s.



Immunohistochemistry of paraffin-embedded rat testis using CDC42 antibody (CAB1188) at dilution of 1:100 (40x lens).



Immunofluorescence analysis of C6 cells using CDC42 Rabbit pAb (CAB1188) at dilution of 1:50 (40x lens). Blue: DAPI for nuclear staining.



Immunofluorescence analysis of NIH-3T3 cells using CDC42 Rabbit pAb (CAB1188) at dilution of 1:50 (40x lens). Blue: DAPI for nuclear staining.