

BetaIII-Tubulin Rabbit Polyclonal Antibody



CAB11933

Product Information

Size:

20uL, 50uL

Observed MW:

50kDa

Calculated MW:

42kDa/50kDa

Applications:

WB IHC ICC IF FC

Reactivity:

Human, Mouse, Rat

Protein Background

This gene encodes a class III member of the beta tubulin protein family. Beta tubulins are one of two core protein families (alpha and beta tubulins) that heterodimerize and assemble to form microtubules. This protein is primarily expressed in neurons and may be involved in neurogenesis and axon guidance and maintenance. Mutations in this gene are the cause of congenital fibrosis of the extraocular muscles type 3. Alternate splicing results in multiple transcript variants. A pseudogene of this gene is found on chromosome 6.

Immunogen information

Gene ID:

10381

Uniprot

Q13509

Synonyms:

CDCBM; CDCBM1; CFEOM3; CFEOM3A; FEOM3; TUBB4; beta-4; beta Tubulin III; TUBB3

Antibody Information

Recommended dilutions:

WB 1:500 - 1:2000 IHC 1:50
- 1:100 ICC 1:50 - 1:200 IF
1:50 - 1:100 FC 1:20 - 1:50

Source:

Rabbit

Isotype:

IgG

Purification:

Affinity purification

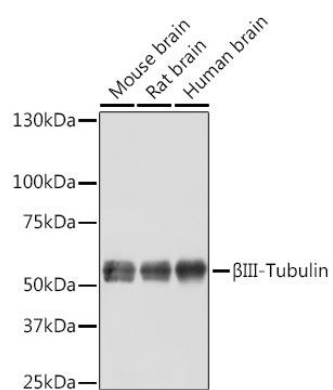
Immunogen:

Recombinant protein of human BetaIII-Tubulin

Storage:

Store at -20°C. Avoid freeze / thaw cycles. Buffer: PBS with 0.02% sodium azide, 50% glycerol, pH7.3.

Product Images



Western blot - β III-Tubulin Rabbit pAb (CAB11933)