

PDGFB Rabbit Polyclonal Antibody



CAB1195

Product Information

Size:

20uL, 50uL, 100uL, 200uL

Observed MW:

27kDa

Calculated MW:

25kDa/27kDa

Applications:

WB, IHC

Reactivity:

Human, Mouse, Rat

Antibody Information

Recommended dilutions:

WB 1:500 - 1:2000

IHC 1:50 - 1:200

Source:

Rabbit

Isotype:

IgG

Purification:

Affinity purification

Protein Background

This gene encodes a member of the protein family comprised of both platelet-derived growth factors (PDGF) and vascular endothelial growth factors (VEGF). The encoded preproprotein is proteolytically processed to generate platelet-derived growth factor subunit B, which can homodimerize, or alternatively, heterodimerize with the related platelet-derived growth factor subunit A. These proteins bind and activate PDGF receptor tyrosine kinases, which play a role in a wide range of developmental processes. Mutations in this gene are associated with meningioma. Reciprocal translocations between chromosomes 22 and 17, at sites where this gene and that for collagen type 1, alpha 1 are located, are associated with dermatofibrosarcoma protuberans, a rare skin tumor. Alternative splicing results in multiple transcript variants.

Immunogen information

Gene ID:

5155

Uniprot

P01127

Synonyms:

PDGFB; IBGC5; PDGF-2; PDGF2; SIS; SSV; c-sis

Immunogen:

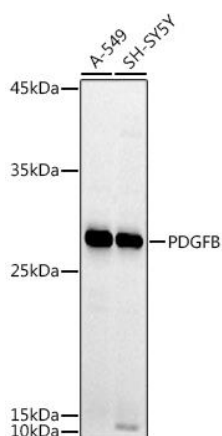
Recombinant fusion protein containing a sequence corresponding to amino acids 20-241 of human PDGFB (NP_002599.1).

Storage:

Store at -20°C. Avoid freeze / thaw cycles.

Buffer: PBS with 0.02% sodium azide, 50% glycerol, pH7.3.

Product Images



Western blot analysis of extracts of various cell lines, using PDGFB antibody (CAB1195) at 1:1000 dilution.

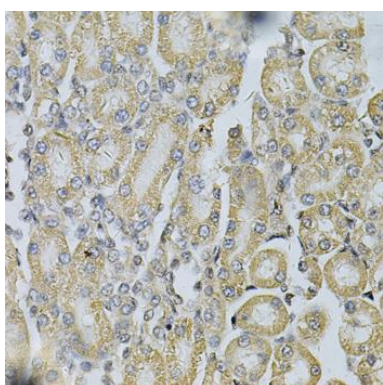
Secondary antibody: HRP Goat Anti-Rabbit IgG (H+L) (CABS014) at 1:10000 dilution.

Lysates/proteins: 25ug per lane.

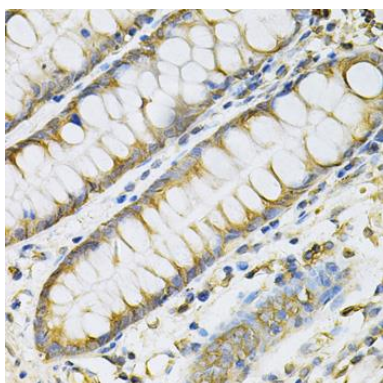
Blocking buffer: 3% non-fat dry milk in TBST.

Detection: ECL Basic Kit (AbGn00020).

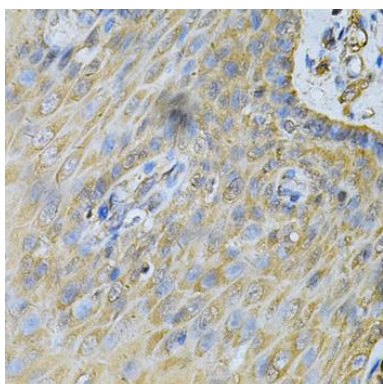
Exposure time: 30s



Immunohistochemistry of paraffin-embedded rat kidney using PDGFB Antibody (CAB1195) at dilution of 1:100 (40x lens).



Immunohistochemistry of paraffin-embedded human colon using PDGFB Antibody (CAB1195) at dilution of 1:100 (40x lens).



Immunohistochemistry of paraffin-embedded human oesophagus using PDGFB Antibody (CAB1195) at dilution of 1:100 (40x lens).