

# SIX1 Rabbit Polyclonal Antibody



CAB11954

---

## Product Information

### Size:

20uL, 50uL, 100uL, 200uL

### Observed MW:

38kDa

### Calculated MW:

32kDa

### Applications:

WB

### Reactivity:

Human, Rat

### Category:

Polyclonal Antibodies

## Protein Background

The protein encoded by this gene is a homeobox protein that is similar to the Drosophila 'sine oculis' gene product. This gene is found in a cluster of related genes on chromosome 14 and is thought to be involved in limb development. Defects in this gene are a cause of autosomal dominant deafness type 23 (DFNA23) and branchiootoc syndrome type 3 (BOS3).

## Immunogen information

### Gene ID:

6495

### Uniprot

Q15475

### Synonyms:

SIX1; BOS3; DFNA23; TIP39

### Immunogen:

Recombinant fusion protein containing a sequence corresponding to amino acids 60-270 of human SIX1 (NP\_005973.1).

## Antibody Information

### Recommended dilutions:

WB 1:500 - 1:2000

### Source:

Rabbit

### Isotype:

IgG

### Purification:

Affinity purification

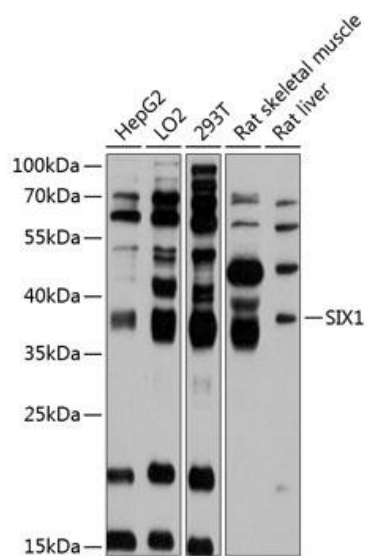
### Storage:

Store at -20°C. Avoid freeze / thaw cycles.

Buffer: PBS with 0.02% sodium azide, 50% glycerol, pH7.3.

## Product Images

---



Western blot analysis of extracts of various cell lines, using SIX1 antibody (CAB11954) at 1:3000 dilution.

Secondary antibody: HRP Goat Anti-Rabbit IgG (H+L) (CABS014) at 1:10000 dilution.

Lysates/proteins: 25ug per lane.

Blocking buffer: 3% non-fat dry milk in TBST.

Detection: ECL Basic Kit (AbGn00020).

Exposure time: 20s.