

KDM3A Rabbit Polyclonal Antibody



CAB11960

Product Information

Size:

20uL, 50uL, 100uL, 200uL

Observed MW:

147kDa

Calculated MW:

147kDa

Applications:

WB IHC IF

Reactivity:

Human, Mouse, Rat

Protein Background

This gene encodes a zinc finger protein that contains a jumonji domain and may play a role in hormone-dependent transcriptional activation. Alternative splicing results in multiple transcript variants.

Immunogen information

Gene ID:

55818

Uniprot

Q9Y4C1

Synonyms:

KDM3A; JHDM2A; JHMD2A; JMJD1; JMJD1A; TSGA

Antibody Information

Recommended dilutions:

WB 1:500 - 1:2000 IHC 1:50
- 1:200 IF 1:50 - 1:200

Source:

Rabbit

Isotype:

IgG

Purification:

Affinity purification

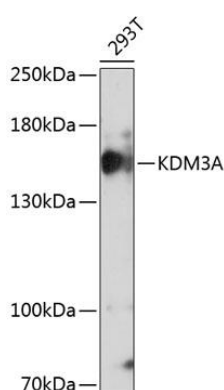
Immunogen:

A synthetic peptide corresponding to a sequence within amino acids 350-450 of human KDM3A (NP_060903.2).

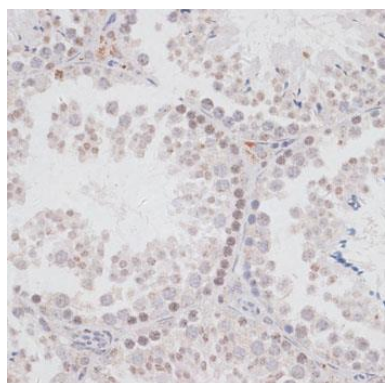
Storage:

Store at -20°C. Avoid freeze / thaw cycles. Buffer: PBS with 0.02% sodium azide, 50% glycerol, pH7.3.

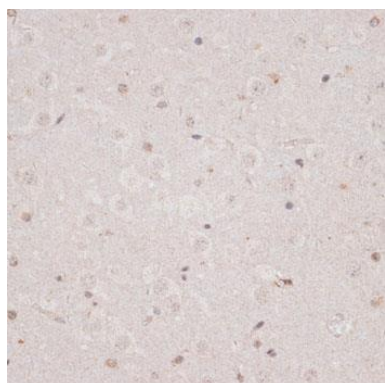
Product Images



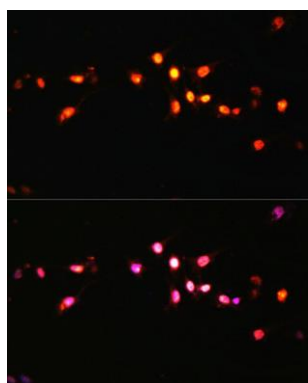
Western blot analysis of extracts of 293T cells, using KDM3A Antibody (CAB11960) at 1:1000 dilution. Secondary antibody: HRP Goat Anti-Rabbit IgG (H+L) (CABS014) at 1:10000 dilution. Lysates/proteins: 25ug per lane. Blocking buffer: 3% nonfat dry milk in TBST. Detection: ECL Basic Kit (CABM00020). Exposure time: 90s.



Immunohistochemistry of paraffin-embedded mouse testis using KDM3A antibody (CAB11960) at dilution of 1:100 (40x lens).



Immunohistochemistry of paraffin-embedded mouse brain using KDM3A antibody (CAB11960) at dilution of 1:100 (40x lens).



Immunofluorescence analysis of C6 cells using KDM3A Polyclonal Antibody (CAB11960) at dilution of 1:100 (40x lens). Blue: DAPI for nuclear staining.